

FW637DR

The primary vehicle description

The secondary vehicle description

EXTERIOR

FRONT

1. Bumper Front; Scratched; 25 to 100mm Thru Paint
2. Bumper Front; Scratched; 25 to 100mm Thru Paint
3. Bumper Front; Scratched; 25 to 100mm Thru Paint
4. Bumper Front; Scratched; 25 to 100mm Thru Paint

PASSENGER SIDE

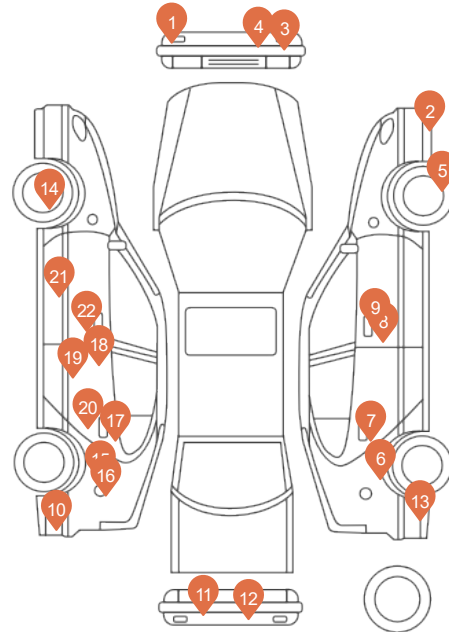
5. Wheel osf; Scratched; Up To 50mm
6. Qtr Panel osr; Scratched; UpTo 25mm Thru Paint
7. Handle Outer osr; Scratched (Painted); UpTo 25mm Thru Paint
8. Door osf; Scratched; UpTo 25mm Thru Paint
9. Door osf; Scratched; UpTo 25mm Thru Paint

REAR

10. Bumper Rear; Scratched; 25 to 100mm Thru Paint
11. Bumper Rear; Dented; 2 Or Less UpTo 10mm
12. Bumper Rear; Scratched; 25 to 100mm Thru Paint
13. Bumper Rear; Scratched; 25 to 100mm Thru Paint

DRIVERS SIDE

14. Wheel nsf; Scratched; Up To 50mm
15. Qtr Panel nsr; Scratched; UpTo 25mm Thru Paint
16. Qtr Panel nsr; Chipped; 1 To 5
17. Handle Outer nsr; Scratched (Painted); UpTo 25mm Thru Paint
18. Door nsr; Scratched; UpTo 25mm Thru Paint
19. Door nsr; Scratched; UpTo 25mm Thru Paint
20. Door nsr; Scratched; UpTo 25mm Thru Paint
21. Door nsf; Scratched; UpTo 25mm Thru Paint
22. Door nsf; Scratched; UpTo 25mm Thru Paint



This diagram is for illustration purposes only and the inspection is made maintaining a distance of 1.5 meters from the vehicle. Minor damages that cannot be seen from this distance cannot be claimed. Minor items may be listed but not shown on the diagram. While every effort is made to ensure that the information contained in BCA Condition report is correct at the time of publication (14/02/2025 16:44), BCA reserves the right to make changes to vehicles available in our auctions, and any other information contained herein. Updated information, if any, is available upon request from BCA.



EXTERIOR - FRONT
Bumper Front; Scratched; 25 to 100mm Thru Paint



EXTERIOR - FRONT
Bumper Front; Scratched; 25 to 100mm Thru Paint



EXTERIOR - FRONT
Bumper Front; Scratched; 25 to 100mm Thru Paint



EXTERIOR - FRONT
Bumper Front; Scratched; 25 to 100mm Thru Paint



EXTERIOR - PASSENGER SIDE
Wheel osf; Scratched; Up To 50mm



EXTERIOR - PASSENGER SIDE
Qtr Panel osr; Scratched; Up To 25mm Thru Paint



EXTERIOR - PASSENGER SIDE
Handle Outer osr; Scratched (Painted); Up To 25mm Thru Paint



EXTERIOR - PASSENGER SIDE
Door osf; Scratched; Up To 25mm Thru Paint



EXTERIOR - PASSENGER SIDE
Door osf; Scratched; Up To 25mm Thru Paint



EXTERIOR - REAR
Bumper Rear; Scratched; 25 to 100mm Thru Paint



EXTERIOR - REAR
Bumper Rear; Dented; 2 Or Less Up To 10mm



EXTERIOR - REAR
Bumper Rear; Scratched; 25 to 100mm Thru Paint

This diagram is for illustration purposes only and the inspection is made maintaining a distance of 1.5 meters from the vehicle. Minor damages that cannot be seen from this distance cannot be claimed. Minor items may be listed but not shown on the diagram. While every effort is made to ensure that the information contained in BCA Condition report is correct at the time of publication (14/02/2025 16:44), BCA reserves the right to make changes to vehicles available in our auctions, and any other information contained herein. Updated information, if any, is available upon request from BCA.



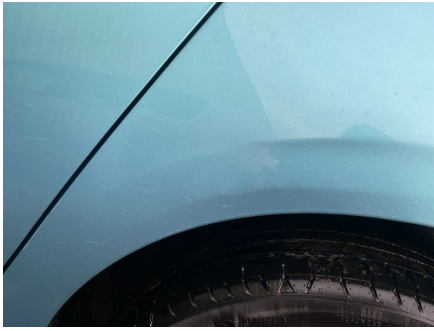
EXTERIOR - REAR
Bumper Rear; Scratched; 25 to 100mm Thru Paint



EXTERIOR - DRIVERS SIDE
Wheel nsf; Scratched; Up To 50mm



EXTERIOR - DRIVERS SIDE
Qtr Panel nsr; Scratched; UpTo 25mm Thru Paint



EXTERIOR - DRIVERS SIDE
Qtr Panel nsr; Chipped; 1 To 5



EXTERIOR - DRIVERS SIDE
Handle Outer nsr; Scratched (Painted); UpTo 25mm Thru Paint



EXTERIOR - DRIVERS SIDE
Door nsr; Scratched; UpTo 25mm Thru Paint



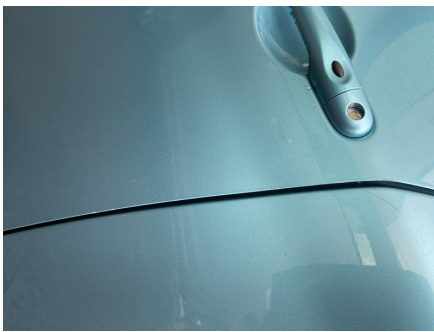
EXTERIOR - DRIVERS SIDE
Door nsr; Scratched; UpTo 25mm Thru Paint



EXTERIOR - DRIVERS SIDE
Door nsr; Scratched; UpTo 25mm Thru Paint



EXTERIOR - DRIVERS SIDE
Door nsr; Scratched; UpTo 25mm Thru Paint



EXTERIOR - DRIVERS SIDE
Door nsf; Scratched; UpTo 25mm Thru Paint

This diagram is for illustration purposes only and the inspection is made maintaining a distance of 1.5 meters from the vehicle. Minor damages that cannot be seen from this distance cannot be claimed. Minor items may be listed but not shown on the diagram. While every effort is made to ensure that the information contained in BCA Condition report is correct at the time of publication (14/02/2025 16:44), BCA reserves the right to make changes to vehicles available in our auctions, and any other information contained herein. Updated information, if any, is available upon request from BCA.