



FORD S-Max

S-Max 2.0 TDCi Aut. Allrad

VIN NO WF0JXXWPCJHU39635
Registration Number PCJHU39635



MOT Date

2026-04-01

Last Service

-

Number of Owners

2

Last Service Mileage

-

Number of Keys

2

First Registration Date

2017-04-21

Odometer Reading

198515 km

Country First Registered

Germany

Inspection Report Summary

Customer	BCA Online	Mechanical Grade	
Inspection Date / Place	2026-05-19 / SULOJA Eggestorf	Cosmetic Grade	5

Vehicle Summary

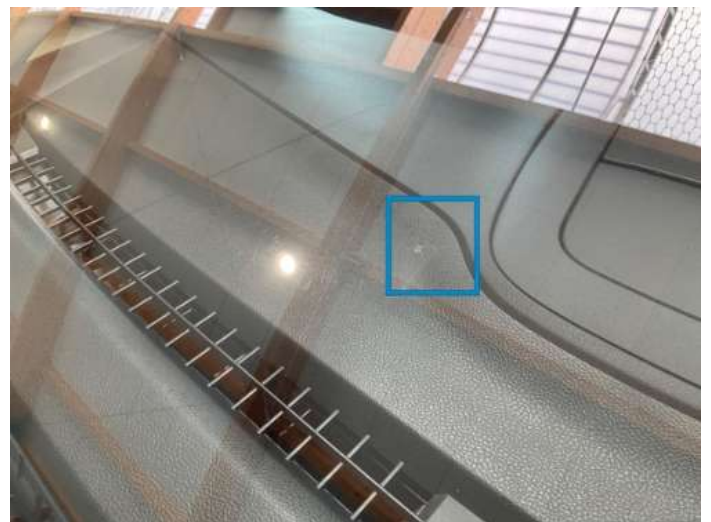
Vehicle Condition	Runner	VAT Type	Margin
Fuel Type	Diesel	Road Worthy	Yes
Colour	White	Engine Size (cc)	1998
Engine Size	2.0	No of Doors	5
Body Type	Stationwagon / Estate	Drive Train	All-Wheel-Drive permanent
Charging Cables		No of Seats	5
NEDC CO2 Rating (g/km)	149	Seat Covering	Cloth/Synthetic Leather
Gearbox Type	Automatic		
First Registration / Construction Year	2017-04-21 / 1900-01-01	Arrival Date	2026-05-05

Vehicle History & Documents

Service Book Available	-	Previous Usage	
Next Service Mileage	km	Imported	No







Equipment

Tinted Glass	Airbag Status	Anti-lock braking	Cruise control
Digital Radio	Heated windscreen	Remote central locking	Satellite navigation
CD Player	Electrically folding wing mirrors	Leather steering wheel	Rear parking sensors
USB Socket	Alloys wheels	Bluetooth telephone interface	Diesel particulate filter
Front parking sensors	Remote adjusting wing mirrors	Roof rails	Stability control
Electrically adjustable seats	Keyless Entry	Radio	

Equipment Details

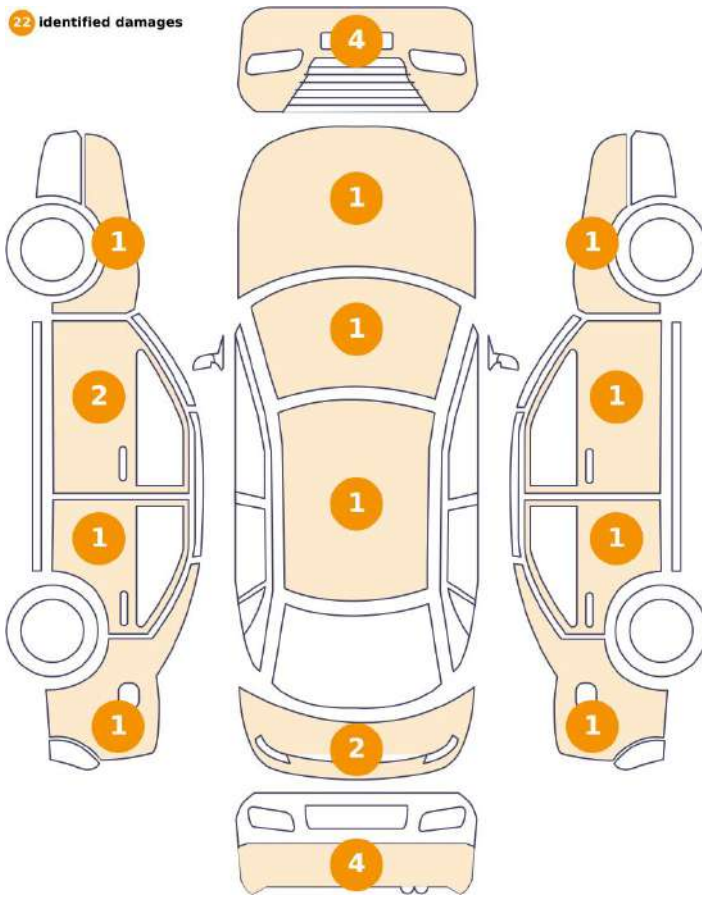
Alloy Wheel Size	17	Air Conditioning	Dual Zone Climate Control
Extra Wheel / Tyre Set	Winter Tyres - Alloy	Seat Heating	Front

Wheels & Tyres

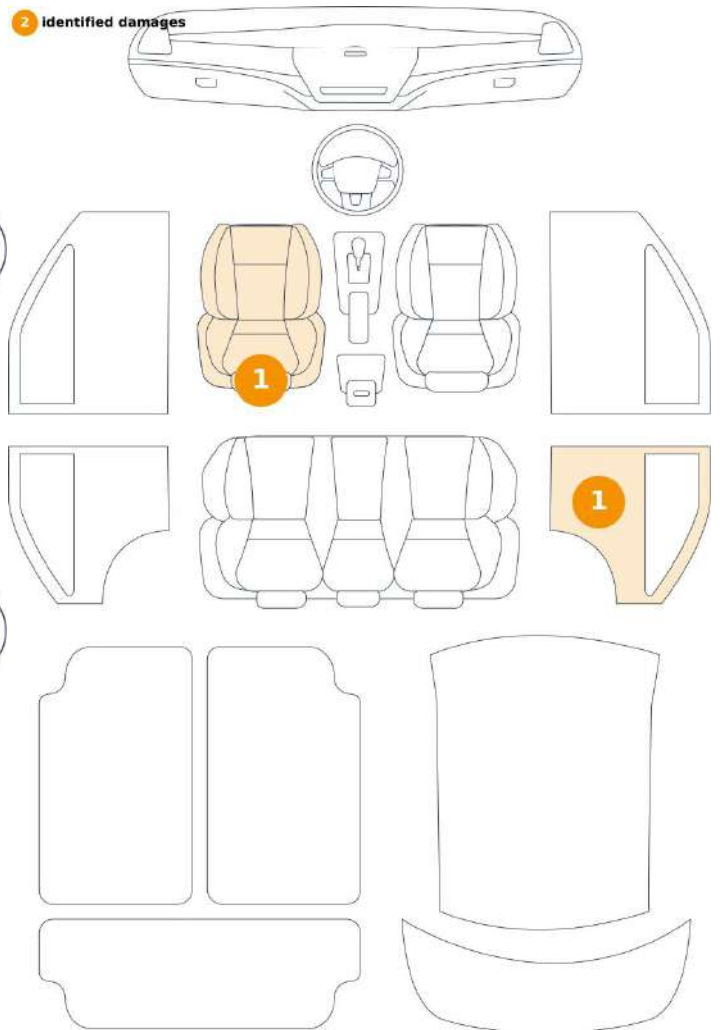
Left Front Tyre Depth	5	Right Front Tyre Depth	5
Left Rear Tyre Depth	4	Right Rear Tyre Depth	4
Extra Wheel - 1 Tyre Depth	4		

Cosmetic Damage

2.2 Identified damages



2 Identified damages

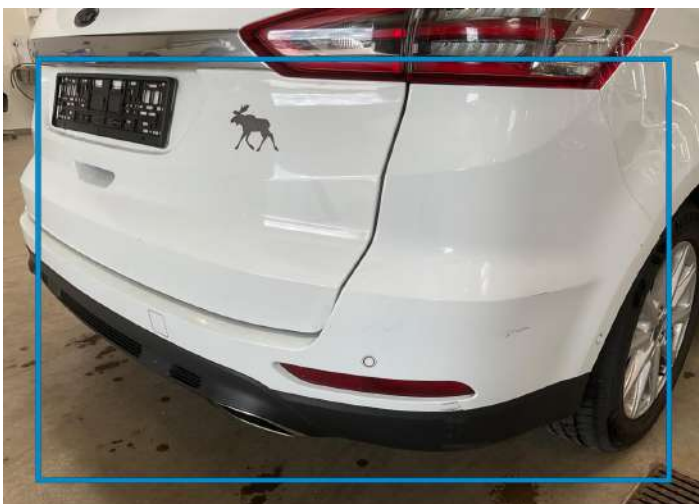


Component	Damage	Comments
1 Door / Back Right	Paint / Scratch / Scuff	
2 Bumper / Back	Paint / Scratch / Scuff	
3 Bumper / Back	Paint / Scratch / Scuff	
4 Door / Front Right	Bodywork / Dent / Dent	
5 Fender / Front Left	Paint / Stone Chip	
6 Door / Front Left	Paint / Stone Chip	
7 Fender / Front Right	Paint / Scratch / Scuff	
8 Bumper / Front	Paint / Scratch / Scuff	
9 Hood	Paint / Stone Chip	
10 Fender / Back Left	Paint / Scratch / Scuff	
11 Bumper / Front	Paint / Scratch / Scuff	

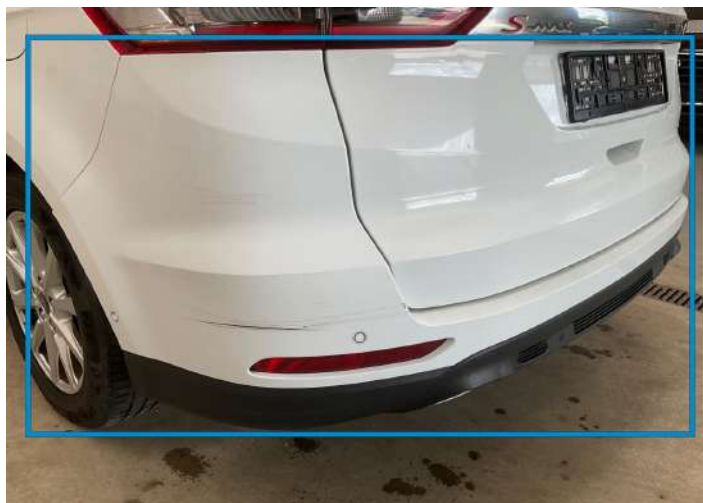
12	Tailgate	Paint / Scratch / Scuff
13	Fender / Back Right	Paint / Scratch / Scuff
14	Door / Front Left	Paint / Scratch / Scuff
15	Door / Back Left	Paint / Scratch / Scuff
16	Panel Filling / Back Right	Interior / Scratched
17	Seat / Front Left	Interior / Ripped
18	Bumper / Front	Bodywork / Breakage / Hole
19	Bumper / Back	Bodywork / Dent / Deformation
20	Tailgate	Paint / Scratch / Scuff
21	Roof	Paint / Stone Chip
22	Bumper / Back	Bodywork / Breakage / Hole
23	Bumper / Front	Bodywork / Poor Previous Repair
24	Windshield / Front	Glass Break / Impact



1. Door / Back Right
Paint / Scratch / Scuff -



2. Bumper / Back
Paint / Scratch / Scuff -



3. Bumper / Back
Paint / Scratch / Scuff -



4. Door / Front Right
Bodywork / Dent / Dent -



5. Fender / Front Left
Paint / Stone Chip -



6. Door / Front Left
Paint / Stone Chip -



7. Fender / Front Right
Paint / Scratch / Scuff -



8. Bumper / Front
Paint / Scratch / Scuff -



9. Hood
Paint / Stone Chip -



10. Fender / Back Left
Paint / Scratch / Scuff -



11. Bumper / Front
Paint / Scratch / Scuff -



12. Tailgate
Paint / Scratch / Scuff -



13. Fender / Back Right
Paint / Scratch / Scuff -



14. Door / Front Left
Paint / Scratch / Scuff -



15. Door / Back Left
Paint / Scratch / Scuff -



16. Panel Filling / Back Right
Interior / Scratched -



17. Seat / Front Left
Interior / Ripped -



18. Bumper / Front
Bodywork / Breakage / Hole -



19. Bumper / Back
Bodywork / Dent / Deformation -



20. Tailgate
Paint / Scratch / Scuff -



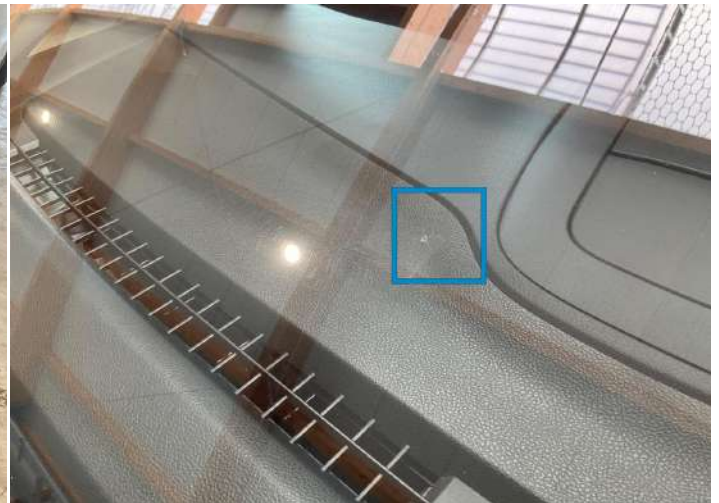
21. Roof
Paint / Stone Chip -



22. Bumper / Back
Bodywork / Breakage / Hole -



23. Bumper / Front
Bodywork / Poor Previous Repair -



24. Windshield / Front
Glass Break / Impact -

Mechanical Condition

Control Lights

Display Defect	✓	No Dashboard Lights	✓
Oil Pressure Warning Light	✓	Airbag Warning Light	✓
Brake Warning Light	✓	ABS Warning Light	✓
ESP Fault/Traction Control Malfunction Light	✓	Power Steering Warning Light	✓
Diesel Particulate Filter Light	✓	Tire Pressure Monitoring System	✓
Alternator / Battery	✓		

Equipments Test

Audio Equipment	✓	Navigation System	✓
Parking Sensors / Cameras Functioning	✓	Central Locking	✓
Main & Spare Keys Functioning	✓	Electric Windows	✓
AC / Heating System	✓		

Engine

Engine Starts	✓	Engine Leak Visible	✓
Engine Status / EML	✓		

Gearbox

Gear Box	✓
----------	---

Levels

Coolant Fluid level	✓	Brakes Fluid	✓
---------------------	---	--------------	---

Test Drive Inspection

Brake

Brake System Anomaly ✓

Steering Wheel

Steering | Noise / Anomaly ✓

Engine

Power Loss ✓

Engine Noise ✓

Fume Quantity ✓

The Gears Scratch / Skip /
Abnormal Operation ✓

General

Test Driven Status ✓

✓ *No troubles detected, good condition or correct tests, according to vehicle age and mileage*

! *Damages or malfunction detected that requires repairs by the buyer*

NA *Not applicable*

☐ *Not tested*

Disclaimer

Please also note the "UserGuide condition report", which shows the scope of the vehicle description.

[User Guide](#)