



HYUNDAI i30

i30cw 1.4 CRDi

VIN NO TMAD281RAEJ040438

Registration Number RAEJ040438



MOT Date

2026-07-01

Last Service

-

Number of Owners

1

Last Service Mileage

-

Number of Keys

2

First Registration Date

2013-07-10

Odometer Reading

276486 km

Country First Registered

Germany

Inspection Report Summary

Customer	BCA Online	Mechanical Grade	
Inspection Date / Place	2026-05-19 / SULOJA Eggestorf	Cosmetic Grade	3

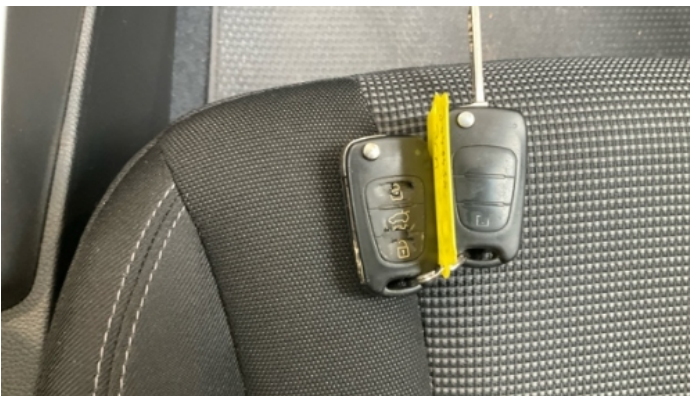
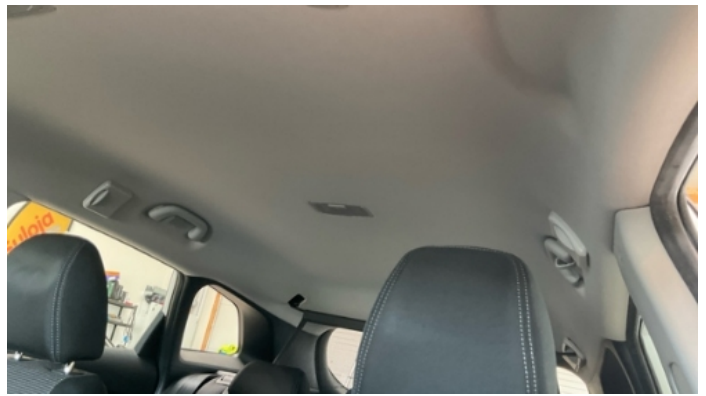
Vehicle Summary

Vehicle Condition	Runner	VAT Type	Margin
Fuel Type	Diesel	Road Worthy	Yes
Colour	White	Engine Size (cc)	1396
Engine Size	1.4	No of Doors	5
Body Type	Stationwagon / Estate	Drive Train	Front
Charging Cables		No of Seats	5
NEDC CO2 Rating (q/km)	113	Seat Covering	Cloth
Gearbox Type	Manual		
First Registration / Construction Year	2013-07-10 / 1900-01-01	Arrival Date	2026-05-15

Vehicle History & Documents

Service Book Available	-	Previous Usage	
Next Service Mileage	km	Imported	No







Equipment

USB Socket	Anti-lock braking	Bluetooth telephone interface	Diesel particulate filter
Remote central locking	CD Player	Radio	Airbag Status
Auxiliary Socket	Cruise control	Remote adjusting wing mirrors	Stability control
Leather steering wheel	Rear parking sensors		

Equipment Details

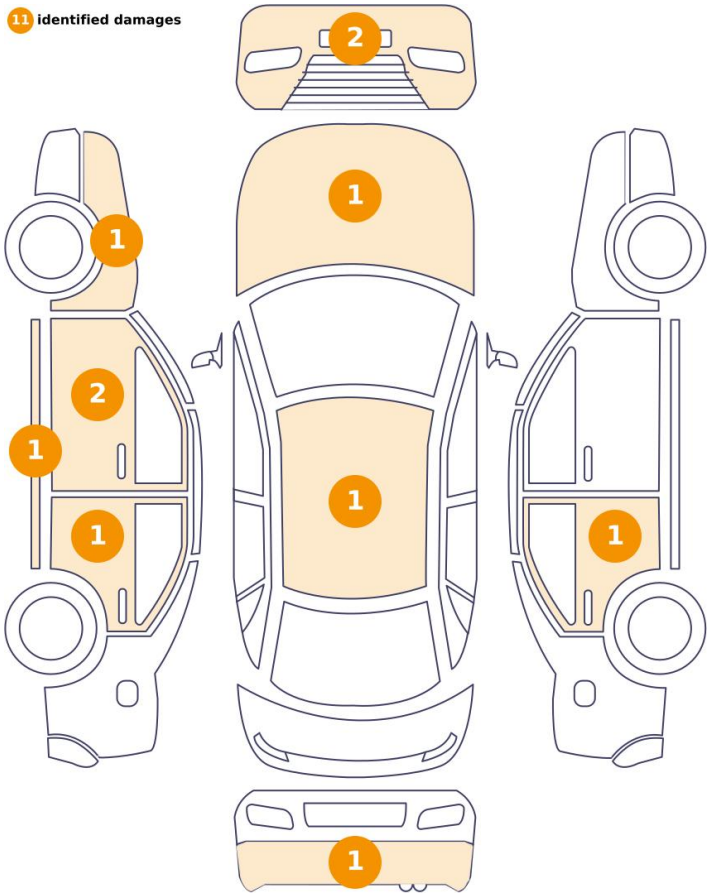
Air Conditioning	Yes	Seat Heating	Front
------------------	-----	--------------	-------

Wheels & Tyres

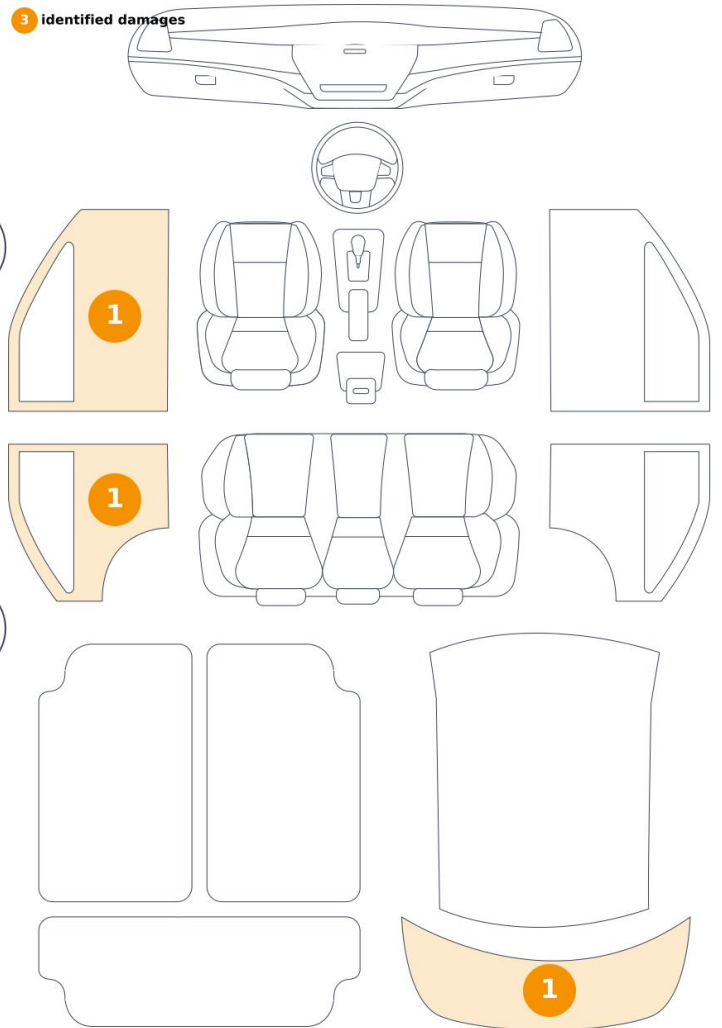
Left Front Tyre Depth	3	Right Front Tyre Depth	3
Left Rear Tyre Depth	3	Right Rear Tyre Depth	3

Cosmetic Damage

11 identified damages



3 identified damages



Component	Damage	Comments
1 Hood	Bodywork / Dent / Dent	
2 Door / Back Right	Paint / Scratch / Scuff	
3 Door / Back Left	Paint / Scratch / Scuff	
4 Door / Front Left	Paint / Scratch / Scuff	
5 Trunk Upholstery / Back	Interior / Scratched	
6 Roof	Paint / Stone Chip	
7 Panel Filling / Back Left	Interior / Scratched	
8 Bumper / Back	Paint / Scratch / Scuff	
9 Panel Filling / Front Left	Interior / Scratched	
10 Fender / Front Left	Paint / Stone Chip	
11 Bumper / Front	Paint / Stone Chip	

12	Rocker Panel / Center Left	Paint / Scratch / Scuff
13	Door Joint / Front Left Middle	Bodywork / Breakage / Hole
14	Bumper / Front	Bodywork / Breakage / Hole



1. Hood
Bodywork / Dent / Dent -



2. Door / Back Right
Paint / Scratch / Scuff -



3. Door / Back Left
Paint / Scratch / Scuff -



4. Door / Front Left
Paint / Scratch / Scuff -



5. Trunk Upholstery / Back
Interior / Scratched -



6. Roof
Paint / Stone Chip -



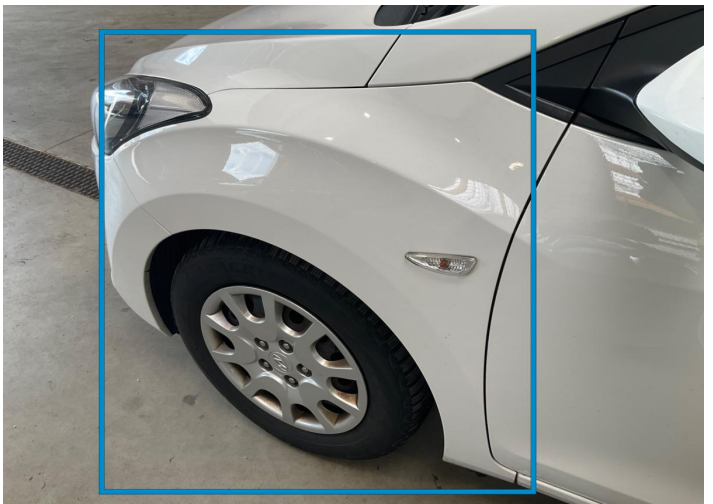
7. Panel Filling / Back Left Interior / Scratched -



8. Bumper / Back Paint / Scratch / Scuff -



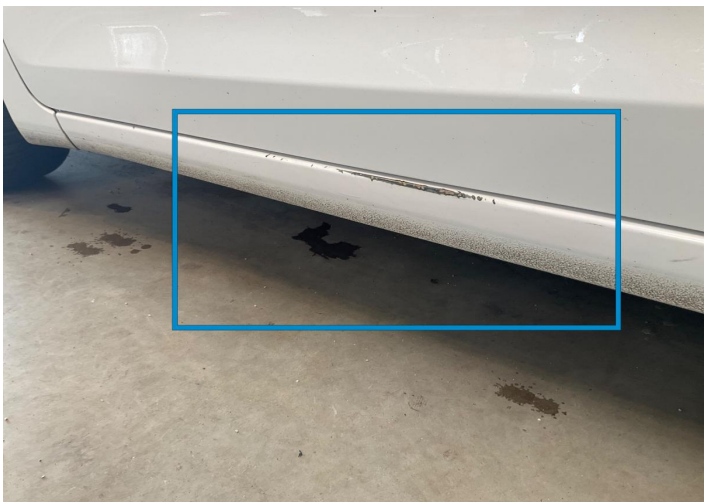
9. Panel Filling / Front Left Interior / Scratched -



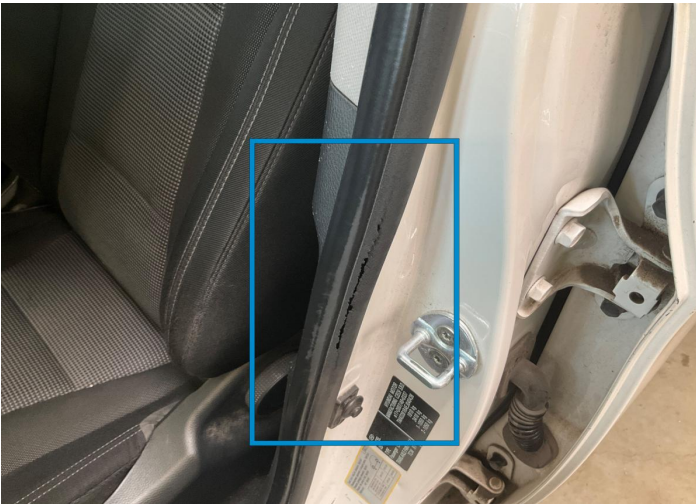
10. Fender / Front Left Paint / Stone Chip -



11. Bumper / Front Paint / Stone Chip -



12. Rocker Panel / Center Left Paint / Scratch / Scuff -



13. Door Joint / Front Left Middle
Bodywork / Breakage / Hole -



14. Bumper / Front
Bodywork / Breakage / Hole -

Mechanical Condition

Control Lights

Display Defect	✓	No Dashboard Lights	✓
Oil Pressure Warning Light	✓	Airbag Warning Light	✓
Brake Warning Light	✓	ABS Warning Light	✓
ESP Fault/Traction Control Malfunction Light	✓	Power Steering Warning Light	✓
Diesel Particulate Filter Light	✓	Tire Pressure Monitoring System	✓
Alternator / Battery	✓		

Engine

Engine Starts	✓	Engine Leak Visible	✓
Engine Status / EML	✓		

Equipments Test

Audio Equipment	✓	Parking Sensors / Cameras Functioning	✓
Central Locking	✓	Main & Spare Keys Functioning	✓
Electric Windows	✓	AC / Heating System	✓

Gearbox

Gear Box	✓
----------	---

Levels

Coolant Fluid level	✓	Brakes Fluid	✓
---------------------	---	--------------	---

Test Drive Inspection

Brake

Brake System Anomaly ✓

Steering Wheel

Steering | Noise / Anomaly ✓

Engine

Power Loss ✓

Engine Noise ✓

Fume Quantity ✓

The Gears Scratch / Skip /
Abnormal Operation !

Clutch

Clutch Functioning !

General

Test Driven Status ✓

✓ **No troubles detected, good condition or correct tests, according to vehicle age and mileage**

! **Damages or malfunction detected that requires repairs by the buyer**

NA **Not applicable**

☐ **Not tested**

Disclaimer

Please also note the "UserGuide condition report", which shows the scope of the vehicle description.

[User Guide](#)