



OPEL Insignia

Insignia Sports Tourer 2.0 Diesel Aut.

VIN NO W0VZM8EGXK1033445

Registration Number GXK1033445



MOT Date

2027-02-01

Last Service



Number of Owners

2

Last Service Mileage



Number of Keys

2

First Registration Date

2019-02-15

Odometer Reading

203196 km

Country First Registered

Germany

Inspection Report Summary

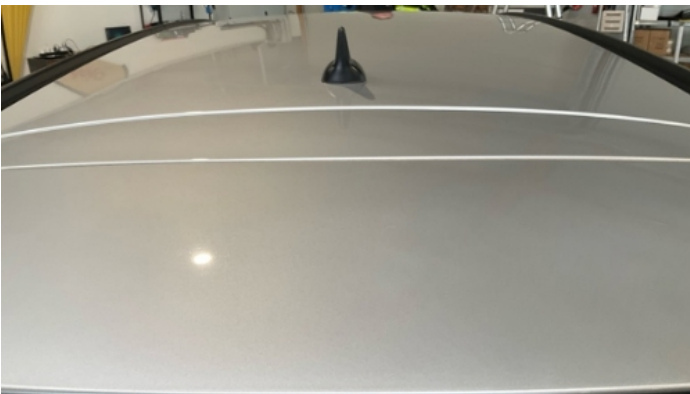
Customer	BCA Online	Mechanical Grade	
Inspection Date / Place	2026-05-12 / SULOJA Eggestorf	Cosmetic Grade	3

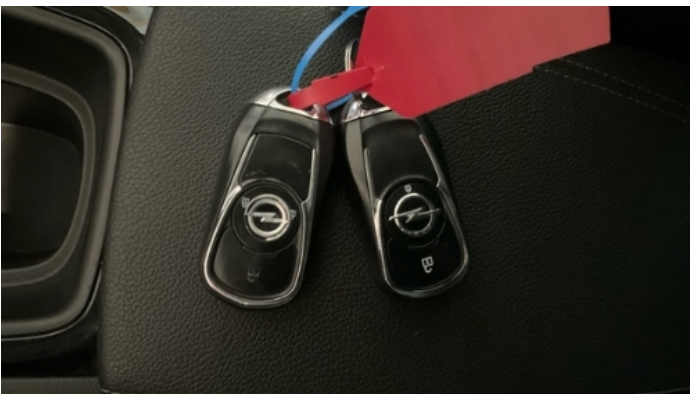
Vehicle Summary

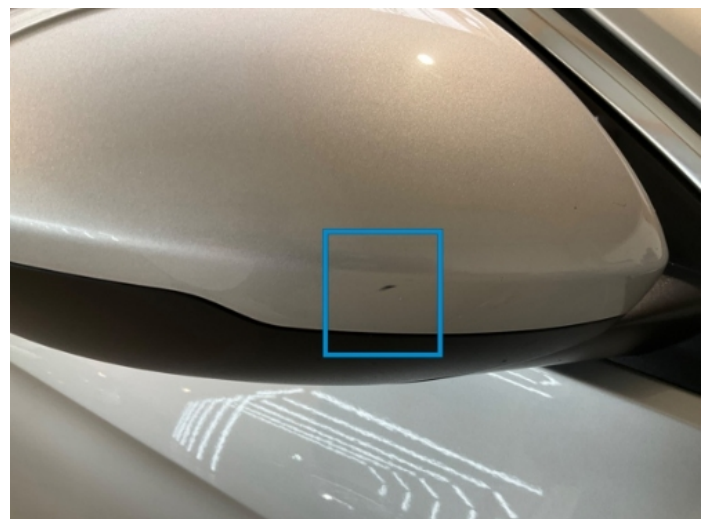
Vehicle Condition	Runner	VAT Type	Margin
Fuel Type	Diesel	Road Worthy	Yes
Colour	Silver	Engine Size (cc)	1956
Engine Size	2.0	No of Doors	5
Body Type	Stationwagon / Estate	Drive Train	Front
Charging Cables		No of Seats	5
NEDC CO2 Rating (q/km)	141	Seat Covering	Cloth
Seat Colour		Seat Covering Name	Grau
Gearbox Type	Automatic		
First Registration / Construction Year	2019-02-15 / 1900-01-01	Arrival Date	2026-05-06

Vehicle History & Documents

Service Book Available	-	Previous Usage	
Next Service Mileage	km	Imported	No







Equipment

Tinted Glass	Airbag Status	AndroidAuto	AppleCarPlay
Bluetooth telephone interface	Diesel particulate filter	Front fog lamps	Remote adjusting wing mirrors
Reversing Camera	Satellite navigation	Stability control	Radio
USB Socket	Alloys wheels	Anti-lock braking	Auxiliary Socket
Cruise control	Digital Radio	Front parking sensors	Remote central locking
Roof rails	Split folding rear seats	Leather steering wheel	Rear parking sensors

Equipment Details

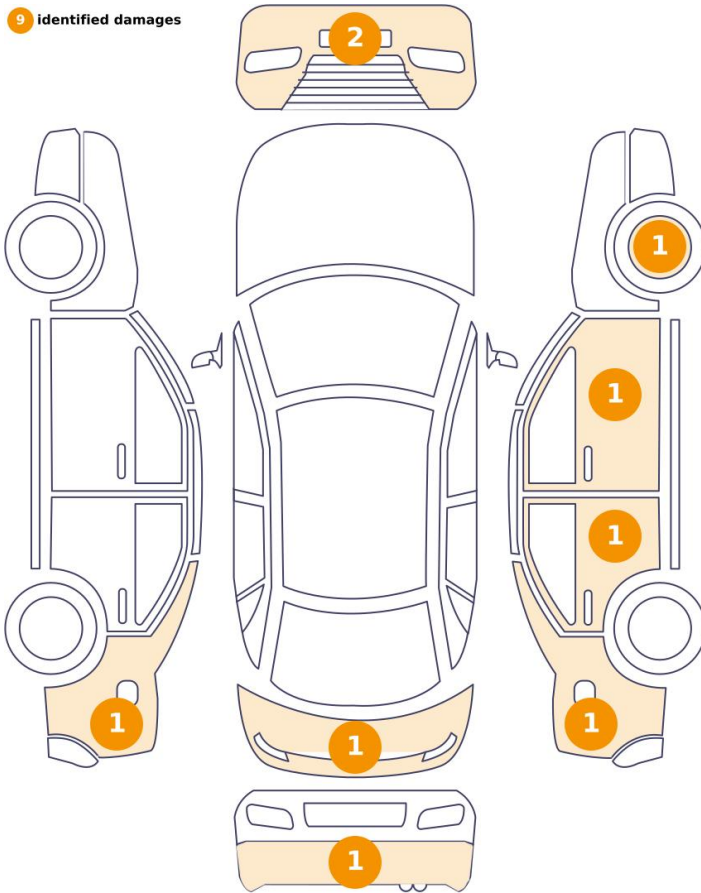
Alloy Wheel Size	17	Air Conditioning	Dual Zone Climate Control
------------------	----	------------------	---------------------------

Wheels & Tyres

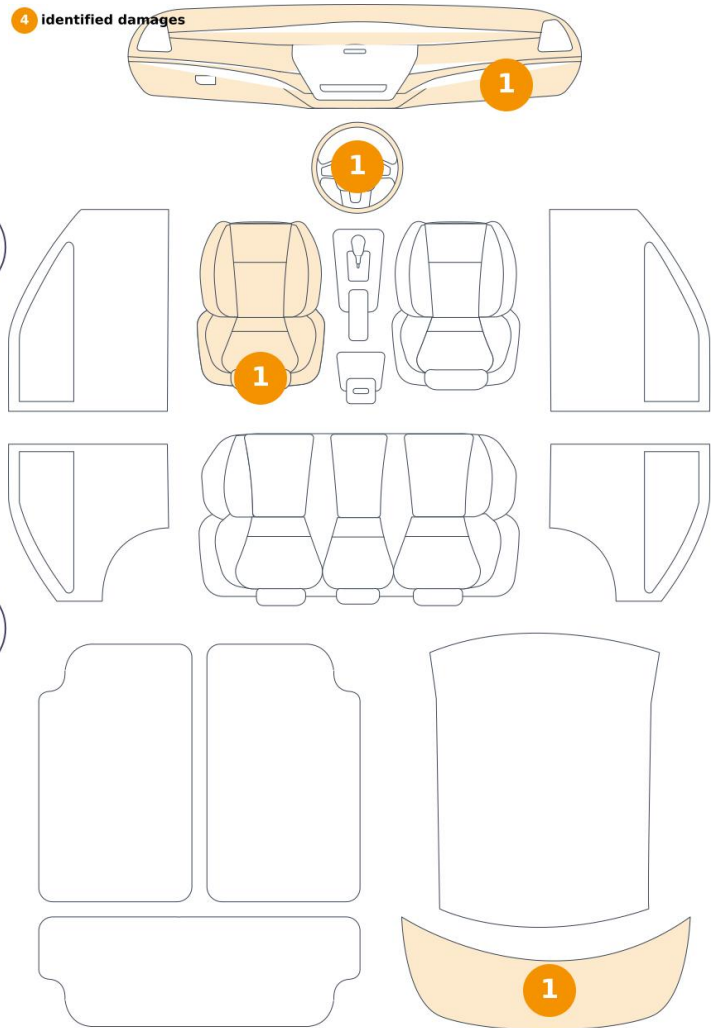
Left Front Tyre Depth	3	Right Front Tyre Depth	3
Left Rear Tyre Depth	4	Right Rear Tyre Depth	4

Cosmetic Damage

9 identified damages



4 identified damages



Component	Damage	Comments
1 Bumper / Front	Paint / Scratch / Scuff	
2 Rim / Front Right	Out of Bodywork / Scratch	
3 Rear Window / Back	Glass Break / Scratch / Scratch	
4 Trunk Upholstery / Back	Interior / Scratched	
5 Steering Wheel / Front	Interior / Worn - out	
6 Seat / Front Left	Interior / Worn - out	
7 Bumper / Front	Paint / Scratch / Scuff	
8 Fender / Back Left	Bodywork / Dent / Dent	
9 Fender / Back Right	Bodywork / Dent / Dent	
10 Glovebox	Interior / Scratched	
11 Bumper / Back	Paint / Scratch / Scuff	

12 Door / Back Right Bodywork / Dent / Dent

13 Mirror / Front Right Paint / Scratch / Scuff



1. Bumper / Front
Paint / Scratch / Scuff -



2. Rim / Front Right
Out of Bodywork / Scratch -



3. Rear Window / Back
Glass Break / Scratch / Scratch -



4. Trunk Upholstery / Back
Interior / Scratched -



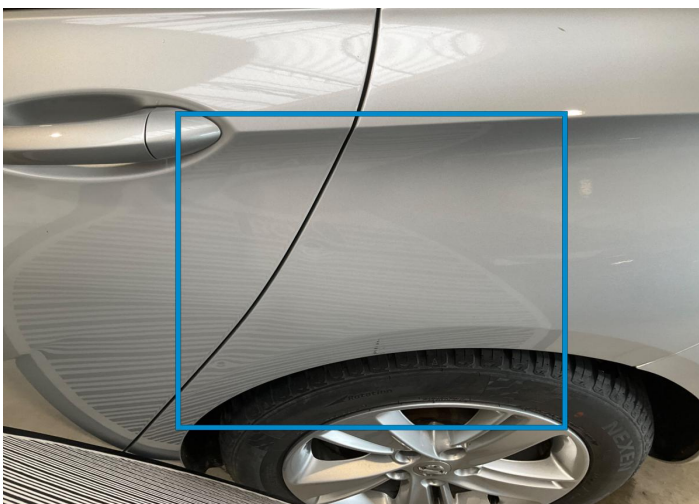
5. Steering Wheel / Front
Interior / Worn - out -



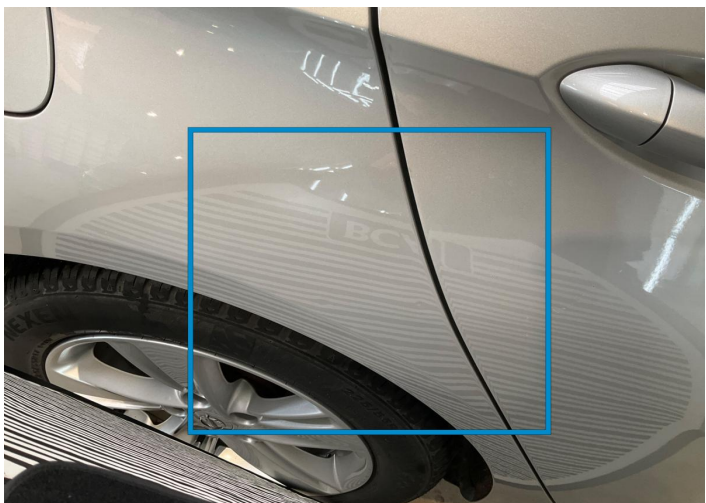
6. Seat / Front Left
Interior / Worn - out -



7. Bumper / Front
Paint / Scratch / Scuff -



8. Fender / Back Left
Bodywork / Dent / Dent -



9. Fender / Back Right
Bodywork / Dent / Dent -



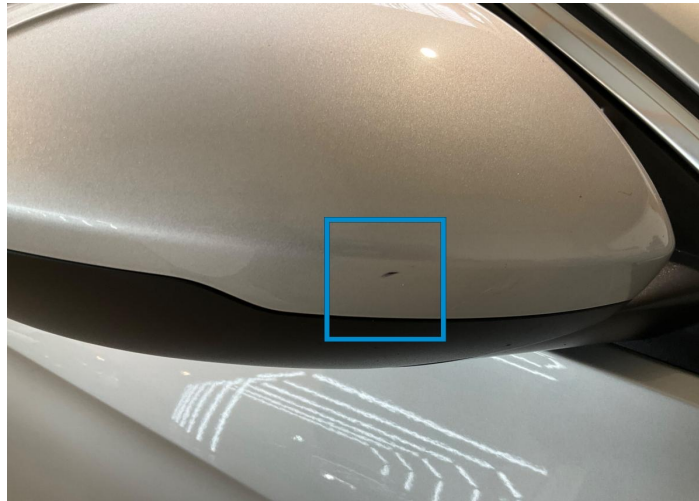
10. Glovebox
Interior / Scratched -



11. Bumper / Back
Paint / Scratch / Scuff -



12. Door / Back Right
Bodywork / Dent / Dent -



13. Mirror / Front Right
Paint / Scratch / Scuff -

Mechanical Condition

Control Lights

Display Defect	✓	No Dashboard Lights	✓
Oil Pressure Warning Light	✓	Airbag Warning Light	✓
Brake Warning Light	✓	ABS Warning Light	✓
ESP Fault/Traction Control Malfunction Light	✓	Power Steering Warning Light	✓
Diesel Particulate Filter Light	✓	Tire Pressure Monitoring System	✓
Alternator / Battery	✓		

Equipments Test

Navigation System	✓	Central Locking	✓
Main & Spare Keys Functioning	✓	Electric Windows	✓
AC / Heating System	✓		

Engine

Engine Starts	✓	Engine Leak Visible	✓
Engine Status / EML	✓		

Gearbox

Gear Box	✓
----------	---

Levels

Coolant Fluid level	✓	Brakes Fluid	✓
---------------------	---	--------------	---

Test Drive Inspection

Brake

Brake System Anomaly ✓

Steering Wheel

Steering | Noise / Anomaly ✓

Engine

Power Loss ✓

Engine Noise ✓

Fume Quantity ✓

The Gears Scratch / Skip /
Abnormal Operation ✓

Clutch

Clutch Functioning ✓

General

Test Driven Status ✓

✓ **No troubles detected, good condition or correct tests, according to vehicle age and mileage**

! **Damages or malfunction detected that requires repairs by the buyer**

NA **Not applicable**

☐ **Not tested**

Disclaimer

Please also note the "UserGuide condition report", which shows the scope of the vehicle description.

[User Guide](#)