



Expertise

Protocol number: 40743812
Order No. / Reference: 24991269
Inspection date: 24 Jul 2025

Manufacturer: Kia	Model: e-Soul Spirit EV 204
VIN: KNAJ3811FL7011641	



Vehicle details	
Manufacturer / Type / Model / Equipment	
Kia e-Soul Spirit EV 204	
Vehicle Identification number	KNAJ3811FL7011641
Mileage (Read)	122,178 km
First registration	7 Jul 2020
Number of holders	1
Next periodical technical inspection	06/2025
(Report on hand)	
Power / Engine displacement	29 kw / 0 ccm
Fuel type / Cylinder	Electric / 0
Gearbox / Number of gears	Direct drive / 1
Type of drive	Front drive
Type of vehicle	Station wagon
Colour / colour code	Black Metallic
Doors / Seats	5 / 5
Upholstery type	Leather
Colour of upholstery	Black
Re/Import	no
Driving readiness	Roadworthy



Vehicle details

Maintenance booklet / proof	digital proof / complete	Next maintenance in	9,053 km
Last maintenance on / at	03/2025 at 116,231 km		
Key is / should be	2 / 2	FZG documents	ZB#2 (B) was available (copy), ZB#1 (S) was not available
		Letter No.	FU378682
Previous damage / Accident	Detectable	Repainting	Detectable
Inspection conditions	Sufficient	Lifting equipment / pit	yes
Test drive	Not performed	Engine function test	Performed
Driving readiness	Roadworthy		
Manufacturer key number/ type code number	8253 / AIH 00002		
Emission standard	2017/1151;WLTP;reine Elektrofz	Fine dust sticker	
Permitted total weight	2,180 kg	Empty weight	

Tyres

Mounted tyres

#	Tyre size	Type of tyre	Manufacturer	Tread depth
1)	215/55 R17 94V	Summer tyres on Light alloy	Goodyear	4mm / 4mm
2)	215/55 R17 94V	Summer tyres on Light alloy	Goodyear	4mm / 4mm

Additional tyres

#	Tyre size	Type of tyre	Manufacturer	Tread depth
1)	215/55 R17 98V	Winter tyres on Light alloy	Dunlop	5mm / 5mm
2)	215/55 R17 98V	Winter tyres on Light alloy	Dunlop	5mm / 5mm

Replacement

Typ	Tyre size	Type of tyre	Manufacturer	Tread depth
	Tirefit	Expiration date 11/2024		

Legend: Tread depth information for tires on the left is in the first place, for tires on the right is in the second place on the axle in the direction of travel

Equipment

Standard equipment

- ABS (anti-lock braking system) with electronic brake force distribution
- Airbag: 2 side airbags
- Active lane keeping assistant with corrective steering intervention (Lane Keep Assist, LKA)
- Electrically folding exterior mirrors
- Exterior mirrors painted in roof color
- Hill Start Assist (HAC)
- Brake Assist (BAS)
- Front roof console with reading spots
- Three-point safety belts with belt force limiters on all seats, height-adjustable at the front
- Twilight sensor
- Electronic Stability Program (ESC) with Traction Control (TCS)
- Forward collision warning
- counter-steering support
- Luggage compartment cover
- Removable luggage compartment floor
- Gearbox: Reduction gear
- Back window, heater
- Self-dimming interior rearview mirror
- ISOFIX mounts on outer rear seats
- Automatic climate control with anti-fog system
- Charging cable
- LED fog lights
- LED taillights
- Heated steering wheel
- Steering wheel: leather steering wheel
- Front center armrest
- Navigation system: Kia map navigation (10.25 inches)
- On-board charger (1-phase, 7.2 kW)
- Package: P1 - Eco Package
- Rear parking sensors
- Radio accessories: Bluetooth hands-free system
- Radio accessories: Harman/Kardon premium sound system with a total of 10 speakers
- Tire pressure monitoring system (TPMS)
- Wheels: 17-inch alloy wheels with 215/55 R17 94W tires
- Side trim in chrome
- Seats: Driver's seat height adjustable
- Seats: Heated front seats
- Smart Key and start button
- Traffic jam assistant (Lane Follow Assist, LFA)
- Socket: USB charging socket
- Phone: Smartphone interface Android Auto and Apple CarPlay
- Glazing: Privacy glazing (dark tinted windows from B-pillar)
- Virtual Engine Sound System (VESS) for pedestrian protection
- Adaptive cruise control including Stop&Go function
- Airbag: 2 front airbags
- Airbag: 2 curtain airbags
- Ambient lighting, pulse-controlled
- Heated exterior mirrors
- Electrically adjustable exterior mirrors
- Exterior mirrors with integrated indicators
- On-board computer
- Roof console with glasses compartment
- Roof rails
- Third brake light with LED
- Drive Mode Select
- Electronic parking brake with auto-hold function
- Electric windows front and rear
- High beam assistant
- Floor mat set
- Luggage net eyelets in the luggage compartment
- Luggage compartment lighting
- Speed limiter
- Head-up display (HUD)
- Rear window wiper
- Instrument panel with supervision LCD display (7.0 inches)
- Headrests on all seats are height-adjustable
- LED headlights (low beam and high beam) with automatic headlight range adjustment
- LED daytime running lights
- Steering wheel height and depth adjustable
- Steering wheel: multifunction steering wheel
- Fatigue warning
- Emergency call service e-Call
- Online services UVO CONNECT with Kia Live
- Package: P2 - Technology
- Upholstery: Cloth
- Radio accessories: Digital radio reception DAB+
- Radio accessories: USB port
- Rain sensor
- Tire repair kit
- Rear view camera
- Power steering
- Seats: Rear seat backrest split 60:40, foldable
- Seats: Pocket on the back of the passenger seat
- Sun visors with illuminated make-up mirrors
- socket (12 V)
- Bumpers in body color
- Door handles in body color
- Interior door handles in satin chrome



- Thermal insulation glazing

- Glazing: Windshield and front side windows in solar glass (UV protection)
- Immobiliser
- Central locking

Extra equipment

- Package: P4 - Leather Package (leather interior with genuine leather seat contact surfaces - heated rear seats (seat surface, outer seats) - front seat ventilation - driver and front passenger seats with 8-way electrical adjustment - driver's seat with 2-way electrically adjustable lumbar support)
- Package: P3 - Electric glass sliding/tilting roof (reading, interior and trunk lights in LED)
- Paintwork: metallic paint

Brief expert findings

Documents submitted	At the time of the inspection, the registration certificate Part 2 (letter) was available, but the registration certificate Part 1 (certificate) was not. (Copy)
VIN comparison	The vehicle identification number (VIN) was read and the undersigned verified that it matched the documents submitted during the inspection.
Inspection	The inspection conditions were sufficient for the assessment of the vehicle. Lifting equipment and a pit were available for examining the vehicle.
Test drive	No test drive/maneuvering was carried out during the inspection of the vehicle.
Engine function test	An engine test run was performed.
Driving readiness	The vehicle was drivable at the time of inspection.

Value reducing factors

No.	Component group	Description
1	2nd wheel set	1 alloy rim - Scratch(es) - No deduction
2	2nd wheel set	1 tyre - Damaged - No deduction
3	Equipment	Tirefit filler - Expired - Replace
4	Wing mirror - left side	Cap - Scratch(es) - Smart repair
5	Boot lid / rear door	Boot lid - dent(s) - Smart repair
6	Vehicle glazing	Windscreen with rain sensor - Stone chips - Smart repair
7	Bonnet	Bonnet - Scratch(es) - Cover / polish
8	Door - rear left side	Door - dent(s) - Smart repair
9	Door - rear right side	Door - Scratch(es) - Smart repair
10	Sill - left side	Sill - Scratch(es) - Smart repair
11	Misc.	Main inspection - Due - Perform
12	Side panel - rear left side	Side panel - Dent / paintcoat damage - Repair and paint
13	Rear bumper	Rear bumper - Scratch(es) - Paint

Wear and tear

No.	Component group	Description
1	Seat - front	Seat - right side - Abrasion - No deduction

The vehicle shows signs of wear commensurate with its age and use.



Previous damages

No.	Previous damage	Extent of damage (Net)
1	Rear, Side right, Provided by user / customer, from 14 Oct 2022	1.817,01 €
2	Front, Side - left, Side right, Provided by user / customer, from 20 May 2023	2.410,02 €
3	Rear, Side right, Provided by user / customer, from 29 Oct 2021	5.090,67 €

Repainting

No. Repainting

- Side panel - rear left side
- Side panel - rear right side
- Door - front left side

Paint coat thickness measurement

Side panel - rear left side	224 µm	Side panel - rear right side	170 µm
Door - front left side	176 µm		

Order/Scope of order

The order was placed to prepare a sales report for the vehicle described. This includes the following:

- Description of core relevant information about the vehicle
- Documentation of equipment features
(*Delivery by third-party service providers*)
- Documentation of damage, defects, missing parts
- Documentation of previous damage, unrepaired previous damage, repainting
- a brief visual or functional inspection of the equipment details if possible.
(*Functional tests of driver assistance systems are not included in the scope of services!*)
- a photo documentation of the vehicle

Basis for the order

This product is based on the Alphabet Fuhrpark GmbH guidelines for vehicle returns and valuations. The expert makes the explicit findings in each individual case objectively within the framework of the specified standards based on his or her own expertise.

The vehicle inspection takes place in a disassembled state.

Damage or defects that can only be detected during disassembly/diagnosis work or through advanced knowledge remain within the scope of the prognosis risk. An extended risk exists for concealed defects caused by fraudulent deception and not identifiable by the expert.

Damage or defects resulting from normal use or wear and tear of the vehicle will be accepted according to the applicable standard.

There was no explicit identification or monetary consideration of the expected features within the product.

Features which in their nature and severity slightly exceed normal use but do not constitute unacceptable damage will be documented and identified under signs of use if necessary.

Damage or defects which, according to the underlying standard, can no longer be attributed to normal use or wear and tear are listed in the product under "Depreciating Factors".

Depending on the product specification, a monetary ID can be provided. If this takes place, the costs can be 100% d or pro rata depending on the vehicle's age and mileage.



Previous damages

According to available information previous damages were repaired at the vehicle. Traces of repairs, which allow conclusions about the area of repair, were not recognizable during the inspection.

Comments

- Winterradsatz ist kein Bestandteil des Auslieferungsumfangs.



Figure 1: Diagonal front (left)



Figure 2: Diagonal front (right)



Figure 3: Diagonal rear (left)



Figure 4: Diagonal rear (right)



Figure 5: Interior - front



Figure 6: Interior - rear



Figure 7: Instrument cluster



Figure 8: Instrument panel



Figure 9: interior 360° view ([Online link](#))



Figure 10: Cargo area



Figure 11: VIN



Figure 12: Mounted tyres



Figure 13: Documents



Figure 14: Documents



Figure 15: Additional tyres



Figure 16: Additional tyres

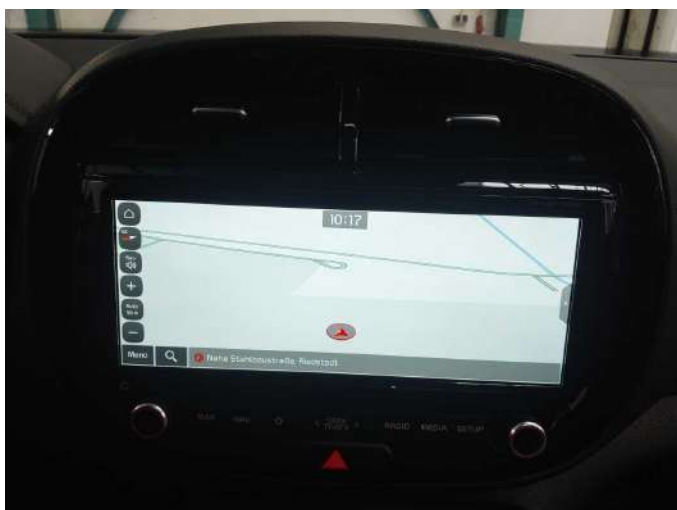


Figure 17: Navigation



Figure 18: Misc.



Figure 19: Misc.



Figure 20: Misc.



Figure 21: Misc.



Figure 22: Misc.



Figure 23: Misc.



Figure 24: Misc.



Figure 25: Misc.



Figure 26: Misc.



Figure 27: Misc.



Figure 28: Misc.



Figure 29: Misc.



Figure 30: Misc.



Figure 31: Misc.



Figure 32: Misc.



Damage 1: 2nd wheel set: 1 alloy rim - Scratch(es) - No deduction



Damage 2: 2nd wheel set: 1 tyre - Damaged - No deduction



Damage 3: Equipment: Tirefit filler - Expired - Replace



Damage 4: Wing mirror - left side: Cap - Scratch(es) - Smart repair



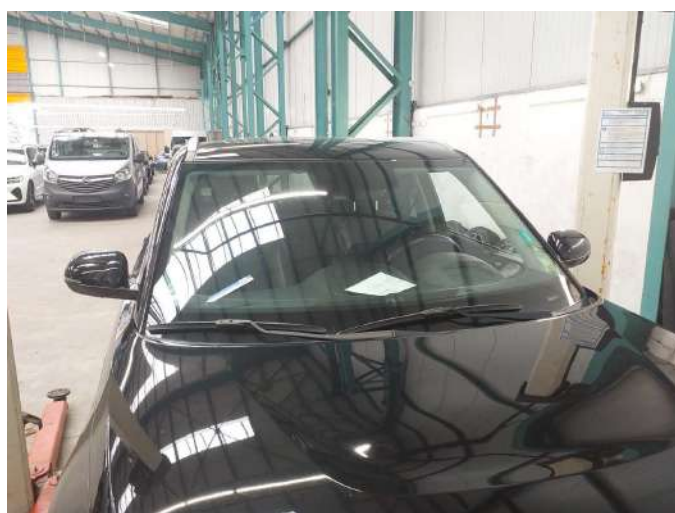
Damage 4: Wing mirror - left side: Cap - Scratch(es) - Smart repair



Damage 5: Boot lid / rear door: Boot lid - dent(s) - Smart repair



Damage 5: Boot lid / rear door: Boot lid - dent(s) - Smart repair



Damage 6: Vehicle glazing: Windscreen with rain sensor - Stone chips - Smart repair



Damage 6: Vehicle glazing: Windscreen with rain sensor - Stone chips - Smart repair



Damage 6: Vehicle glazing: Windscreen with rain sensor - Stone chips - Smart repair



Damage 7: Bonnet: Bonnet - Scratch(es) - Cover / polish



Damage 7: Bonnet: Bonnet - Scratch(es) - Cover / polish



Damage 7: Bonnet: Bonnet - Scratch(es) - Cover / polish



Damage 7: Bonnet: Bonnet - Scratch(es) - Cover / polish



Damage 7: Bonnet: Bonnet - Scratch(es) - Cover / polish



Damage 8: Door - rear left side: Door - dent(s) - Smart repair



Damage 8: Door - rear left side: Door - dent(s) - Smart repair



Damage 8: Door - rear left side: Door - dent(s) - Smart repair



Damage 9: Door - rear right side: Door - Scratch(es) - Smart repair



Damage 9: Door - rear right side: Door - Scratch(es) - Smart repair



Damage 10: Sill - left side: Sill - Scratch(es) - Smart repair



Damage 10: Sill - left side: Sill - Scratch(es) - Smart repair



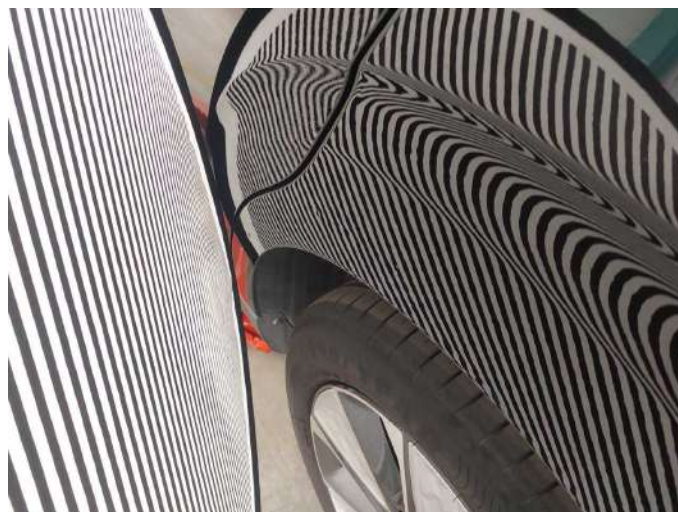
Damage 12: Side panel - rear left side: Side panel - Dent / paintcoat damage - Repair and paint



Damage 12: Side panel - rear left side: Side panel - Dent / paintcoat damage - Repair and paint



Damage 12: Side panel - rear left side: Side panel - Dent / paintcoat damage - Repair and paint



Damage 12: Side panel - rear left side: Side panel - Dent / paintcoat damage - Repair and paint



Damage 13: Rear bumper: Rear bumper - Scratch(es) - Paint



Damage 13: Rear bumper: Rear bumper - Scratch(es) - Paint



Damage 13: Rear bumper: Rear bumper - Scratch(es) - Paint



Damage 13: Rear bumper: Rear bumper - Scratch(es) - Paint



Damage 13: Rear bumper: Rear bumper - Scratch(es) - Paint



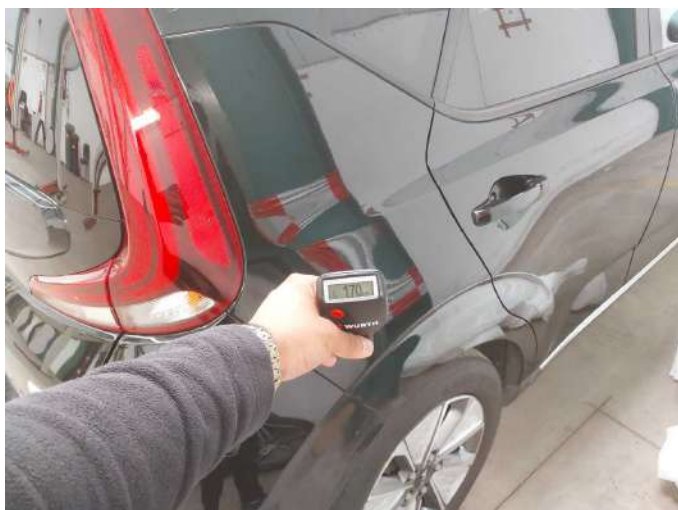
Wear and tear 1: Seat - front: Seat - right side - Abrasion - No deduction



Wear and tear 1: Seat - front: Seat - right side - Abrasion - No deduction



Repainting 1: Side panel - rear left side



Repainting 2: Side panel - rear right side



Repainting 3: Door - front left side



Side panel - rear left side: 224 μm



Side panel - rear right side: 170 μm



Door - front left side: 176 μm



Wartungshistorie

(gemäß Auftraggeber Informationen)

Fahrgestellnummer: KNAJ3811FL7011641

Hersteller / Modell: KIA KIA e-Soul Spirit

Datum	KM-Stand	Beschreibung
25.03.2025	116.231	Regelwartungsdienst
24.07.2024	98.591	Regelwartungsdienst
07.05.2024	92.066	Bremsflüssigkeit; Bremsflüssigkeit ern; Klimaanlage inst.; Systemtest/ Eigendiagnose
08.01.2024	83.696	Regelwartungsdienst
20.06.2023	79.499	HU + AU
05.09.2022	71.631	Regelwartungsdienst
18.08.2022	69.000	Wartung Sonstiges
05.05.2022	56.826	Bremsflüssigkeit ern; Regelwartungsdienst
25.11.2021	43.562	Kleine Inspektion
18.06.2021	29.387	Kleine Inspektion; Bremsflüssigkeit ern
12.11.2020	14.939	Kleine Inspektion