



CITROEN C3
C3 PureTech 82 S&S BVM5 Live

VIN NO VF7SXHMRVKT720292
Registration Number FN809CQ



MOT Date



Last Service

2023-03-20

Number of Owners



Last Service Mileage

87817

Number of Keys



First Registration Date

2020-01-19

Odometer Reading



Country First Registered

France

149855 km

Inspection Report Summary

Customer	BCA Auto Encheres	Mechanical Grade	
Inspection Date / Place	2025-12-16 / BCA MONTMARTIN	Cosmetic Grade	2

Vehicle Summary

Vehicle Condition	Runner	VAT Type	Qualified - Normal Rate
Fuel Type	Petrol	Gearbox Type	Manual
Colour	White	Engine Size (cc)	1199
Engine Size	1.2	No of Doors	5
Family	Light Commercial Vehicle	Drive Train	Front
Charging Cables		No of Seats	2
NEDC CO2 Rating (q/km)	96	Seat Covering	
Engine Rating CV	4	Metalic Colour	
Accident Damage	No	Euro Emission	
First Registration / Construction Year	2020-01-19 / 1900-01-01	Arrival Date	2025-12-15
Service History	87817		

Vehicle History & Documents

Service Book Available	Present	Previous Usage	Normal Use
Manufacturer Warrenty		Odometer Warranty	No
Next Service Mileage	km		





Equipment

Central locking	Cruise control	Power assisted steering	Radio
Front fog lamps			

Equipment Details

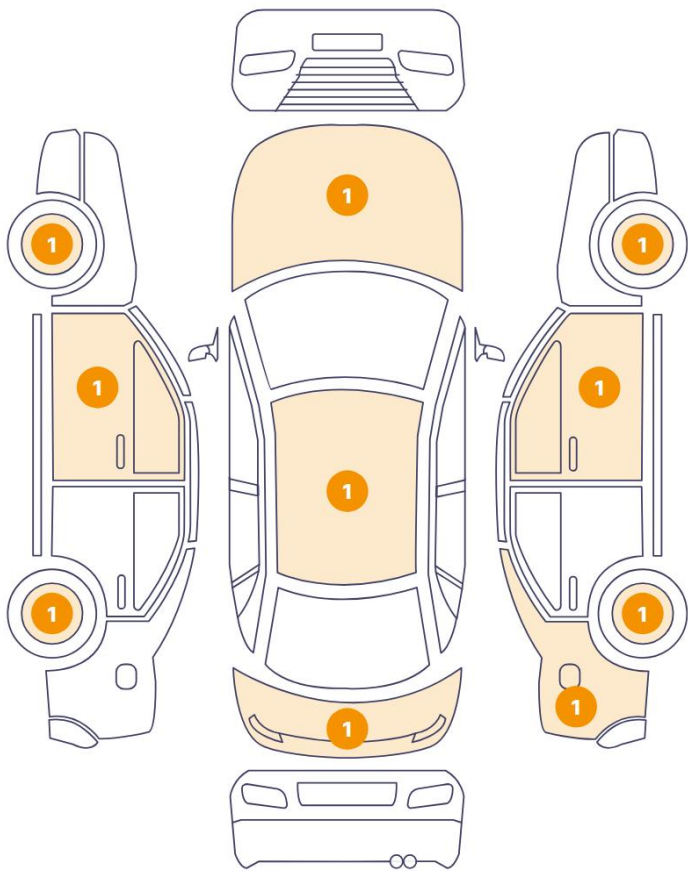
Presence Anti-Theft Lock Nut	Ok	Air Conditioning	Yes
Seat Heating	No		

Wheels & Tyres

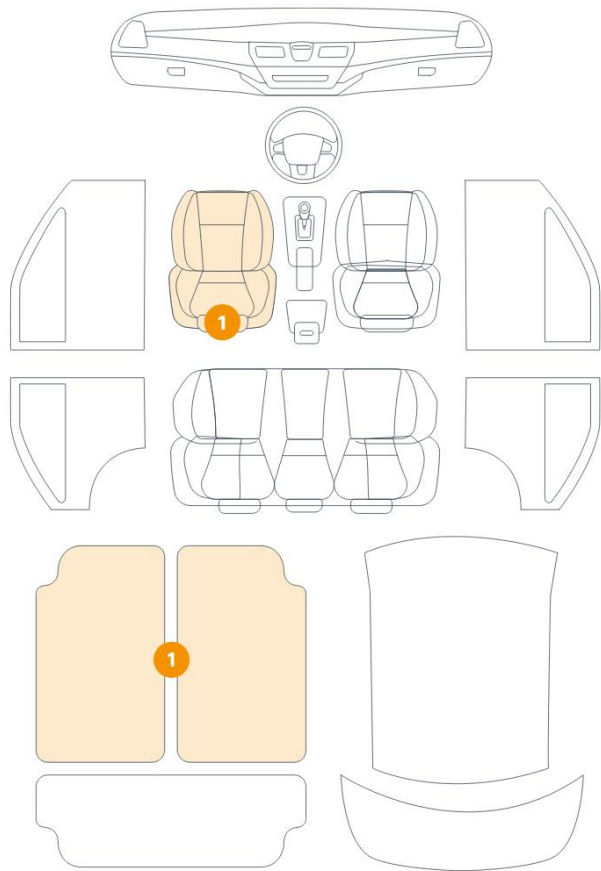
Left Rear Tyre Depth	2	Left Front Tyre Depth	2
Right Rear Tyre Depth	2	Right Front Tyre Depth	2
Tyres Comment	Ok		

Cosmetic Damage

10 Dommages



2 Dommages



Component		Damage	Comments
1	Hood	Bodywork / Dent / Hail Area	
2	Roof	Bodywork / Dent / Hail Area	
3	Floor Carpet	Interior / Dirty	
4	Rim / Front Right	Out of Bodywork / Scratch	
5	Rim / Front Left	Out of Bodywork / Scratch	
6	Rim / Back Left	Out of Bodywork / Scratch	
7	Rim / Back Right	Out of Bodywork / Scratch	
8	Tailgate	Bodywork / Dent / Dent	
9	Fender / Back Right	Paint / Scratch / Line	
10	Seat Cushion / Front Left	Interior / Stained	
11	Door / Front Left	Paint / Scratch / Line	
12	Door / Front Right	Bodywork / Dent / Dent	



1. Hood
Bodywork / Dent / Hail Area -



2. Roof
Bodywork / Dent / Hail Area -



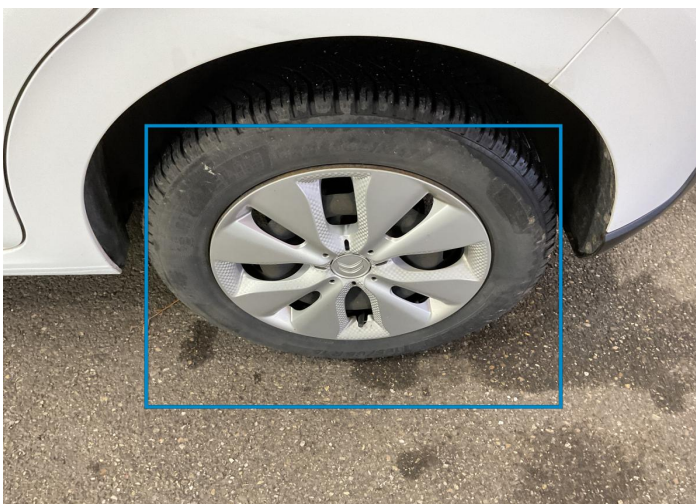
3. Floor Carpet
Interior / Dirty -



4. Rim / Front Right
Out of Bodywork / Scratch -



5. Rim / Front Left
Out of Bodywork / Scratch -



6. Rim / Back Left
Out of Bodywork / Scratch -



7. Rim / Back Right
Out of Bodywork / Scratch -



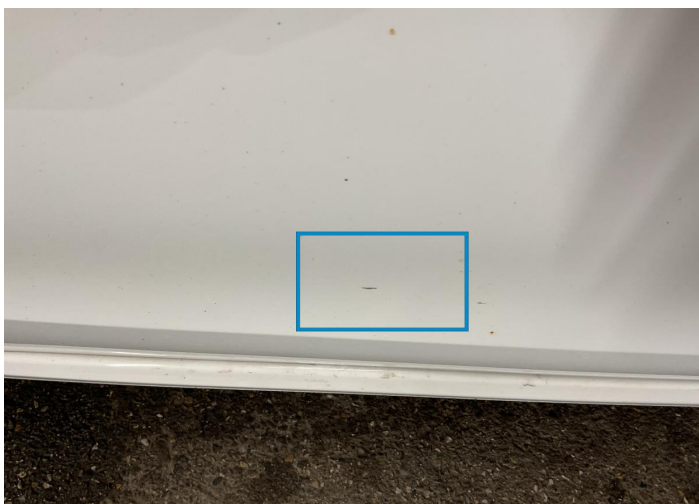
8. Tailgate
Bodywork / Dent / Dent -



9. Fender / Back Right
Paint / Scratch / Line -



10. Seat Cushion / Front Left
Interior / Stained -



11. Door / Front Left
Paint / Scratch / Line -



12. Door / Front Right
Bodywork / Dent / Dent -

Mechanical Condition

Levels			
Oil level	✓	Level - Oil	✓
Coolant Fluid - Condition	✓	Coolant Fluid	✓
Brakes Fluid	✓		
Engine			
Cross Member	NA	Serpentine Belt	✓
Control Liquid Leak	✓		
Equipments Test			
Main & Spare Keys Functioning	✓	Parking Sensors / Cameras Functioning	NA
Convertible, Sunroof, Wagon, Flatbed truck, Tailgate electrics test	NA	Dump / Trail / Tail Gate Lift	NA
Electric Windows	✓	Audio Equipment	✓
Navigation System	NA	AC / Heating System	✓
Central Locking	✓		
Dashboard Lights			
ABS Warning Light	✓	Transmission Warning Light	NA
Diesel Particulate Filter Light	NA	ESP Fault/Traction Control Malfunction Light	✓
4WD Light	NA	Service Light	✓
Dashboard Working	✓	Engine Light	✓
Oil Pressure Warning Light	✓	Airbag Warning Light	✓
Brake Warning Light	✓	Steering Fluid Level	NA
Level - Fuel / Battery	40		
Hybrid/EV			
Charge Port Condition	NA	Charge lead 1 condition /Charge lead 2 condition	NA
Hybrid System Fault	NA		
Comments			

Test Drive Inspection

Test Drive			
Engine functioning	✓	Engine / Aux Belt / Pulley Noise	✓
Steering Noise/Gripping	✓	Vehicle Starts	✓
Engine Power	✓	Smoke Quantity	✓
Transmission	✓	Clutch Functioning	✓
Brakes Functionning	✓	Steering	✓
✓ No troubles detected, good condition or correct tests, according to vehicle age and mileage			
! Damages or malfunction detected that requires repairs by the buyer			
NA Not applicable			
☐ Not tested			

Disclaimer Section

The test drive is done on a flat surface and lasts about 2 minutes. The driven distance is a minimum of 300 meters, including a u-turn, an acceleration and a braking phase. The highest speed achieved during this test is 50km/h. The mechanical check is a visual and dynamic diagnosis without any disassembly. We cannot guarantee any mechanical wear part.