

FT584WY

The primary vehicle description

The secondary vehicle description

This vehicle has 3 buyer advisories

EXTERIOR

FRONT

1. Bumper Front; Cracked; UpTo 25mm
2. Screen Front; Cracked; Replace
3. Bumper Front; Scratched; Over 100mm Thru Paint

PASSENGER SIDE

4. Door osf; Dented; Over 30% Of Panel
5. Qtr Panel osr; Dented; Over 30mm
6. Qtr Panel osr; Scratched; Over 25mm Thru Paint
7. Door osr; Scratched; Over 25mm Thru Paint
8. Door osf; Scratched; Over 25mm Thru Paint
9. Wheel osr; Scratched; Up To 50mm
10. Door Mirror Assy osf; Scratched (Painted); UpTo 25mm Thru Paint

ROOF

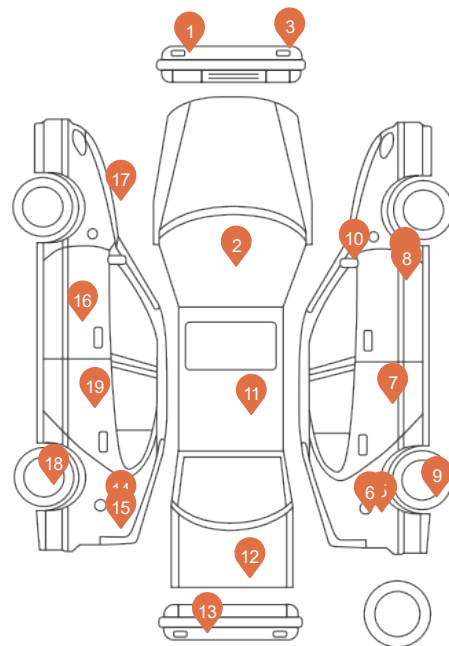
11. Roof; Chipped; Over 5mm

REAR

12. Tailgate; Dented; Over 30% Of Panel
13. Bumper Rear; Cracked; UpTo 25mm

DRIVERS SIDE

14. Qtr Panel nsr; Dented; Hail - Severe
15. Qtr Panel nsr; Scratched; Over 25mm Thru Paint
16. Door nsf; Scratched; Over 25mm Thru Paint
17. Wing nsf; Scratched; UpTo 25mm Thru Paint
18. Wheel nsr; Scratched; Over 50mm
19. Door nsr; Scratched; UpTo 25mm Thru Paint



This diagram is for illustration purposes only and the inspection is made maintaining a distance of 1.5 meters from the vehicle. Minor damages that cannot be seen from this distance cannot be claimed. Minor items may be listed but not shown on the diagram. While every effort is made to ensure that the information contained in BCA Condition report is correct at the time of publication (07/04/2025 14:06), BCA reserves the right to make changes to vehicles available in our auctions, and any other information contained herein. Updated information, if any, is available upon request from BCA.

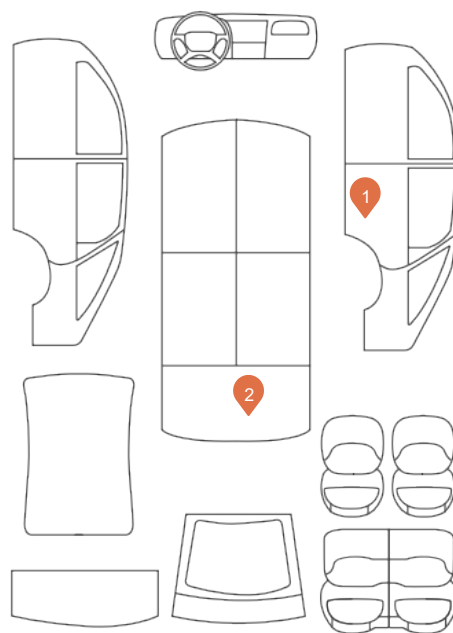
INTERIOR

REAR

1. Door Pad osr; Scuffed; UpTo 25mm

LOAD AREA

2. Shelfload Cover Rear; Missing; Replace



This diagram is for illustration purposes only and the inspection is made maintaining a distance of 1.5 meters from the vehicle. Minor damages that cannot be seen from this distance cannot be claimed. Minor items may be listed but not shown on the diagram. While every effort is made to ensure that the information contained in BCA Condition report is correct at the time of publication (07/04/2025 14:06), BCA reserves the right to make changes to vehicles available in our auctions, and any other information contained herein. Updated information, if any, is available upon request from BCA.



BUYER ADVISORY
General Exterior; Buyer Advisory; Report Only



BUYER ADVISORY
General Exterior; Buyer Advisory; Report Only



BUYER ADVISORY
General Exterior; Buyer Advisory; Report Only



EXTERIOR - FRONT
Bumper Front; Cracked; UpTo 25mm



EXTERIOR - FRONT
Screen Front; Cracked; Replace



EXTERIOR - FRONT
Bumper Front; Scratched; Over 100mm Thru Paint



EXTERIOR - PASSENGER SIDE
Door osf; Dented; Over 30% Of Panel



EXTERIOR - PASSENGER SIDE
Qtr Panel osf; Dented; Over 30mm



EXTERIOR - PASSENGER SIDE
Qtr Panel osf; Scratched; Over 25mm Thru Paint



EXTERIOR - PASSENGER SIDE
Door osf; Scratched; Over 25mm Thru Paint



EXTERIOR - PASSENGER SIDE
Door osf; Scratched; Over 25mm Thru Paint



EXTERIOR - PASSENGER SIDE
Wheel osf; Scratched; Up To 50mm

This diagram is for illustration purposes only and the inspection is made maintaining a distance of 1.5 meters from the vehicle. Minor damages that cannot be seen from this distance cannot be claimed. Minor items may be listed but not shown on the diagram. While every effort is made to ensure that the information contained in BCA Condition report is correct at the time of publication (07/04/2025 14:06), BCA reserves the right to make changes to vehicles available in our auctions, and any other information contained herein. Updated information, if any, is available upon request from BCA.



EXTERIOR - PASSENGER SIDE
Door Mirror Assy osf; Scratched (Painted); UpTo 25mm Thru Paint



EXTERIOR - ROOF
Roof; Chipped; Over 5mm



EXTERIOR - REAR
Tailgate; Dented; Over 30% Of Panel



EXTERIOR - REAR
Bumper Rear; Cracked; UpTo 25mm



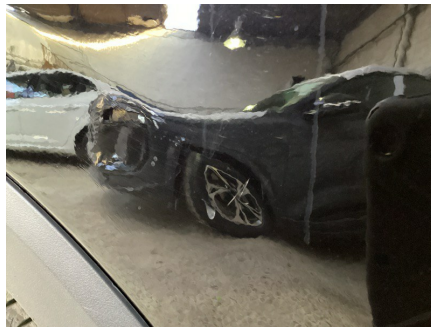
EXTERIOR - DRIVERS SIDE
Qtr Panel nsr; Dented; Hail - Severe



EXTERIOR - DRIVERS SIDE
Qtr Panel nsr; Scratched; Over 25mm Thru Paint



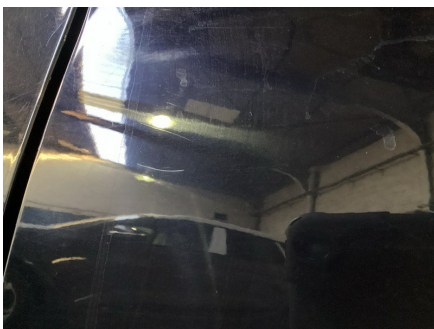
EXTERIOR - DRIVERS SIDE
Door nsf; Scratched; Over 25mm Thru Paint



EXTERIOR - DRIVERS SIDE
Wing nsf; Scratched; UpTo 25mm Thru Paint



EXTERIOR - DRIVERS SIDE
Wheel nsr; Scratched; Over 50mm



EXTERIOR - DRIVERS SIDE
Door nsr; Scratched; UpTo 25mm Thru Paint



INTERIOR - REAR
Door Pad osr; Scuffed; UpTo 25mm



INTERIOR - LOAD AREA
Shelfload Cover Rear; Missing; Replace

This diagram is for illustration purposes only and the inspection is made maintaining a distance of 1.5 meters from the vehicle. Minor damages that cannot be seen from this distance cannot be claimed. Minor items may be listed but not shown on the diagram. While every effort is made to ensure that the information contained in BCA Condition report is correct at the time of publication (07/04/2025 14:06), BCA reserves the right to make changes to vehicles available in our auctions, and any other information contained herein. Updated information, if any, is available upon request from BCA.