



# RENAULT ESPACE

## Espace dCi 160 Energy Twin Turbo Intens EDC

VIN NO VF1RFC00455383361  
Registration Number EC735LJ



MOT Date



Last Service



Number of Owners



Last Service Mileage



Number of Keys



First Registration Date



Odometer Reading



Country First Registered



### Inspection Report Summary

Customer	BCAuto Encheres	Mechanical Grade	
Inspection Date / Place	2026-04-21 / BCA REDING	Cosmetic Grade	3

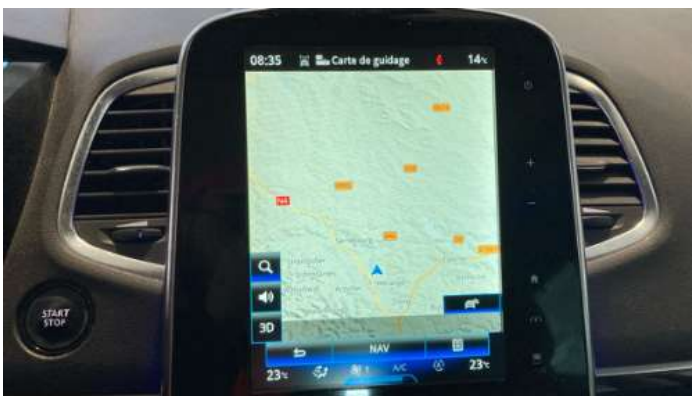
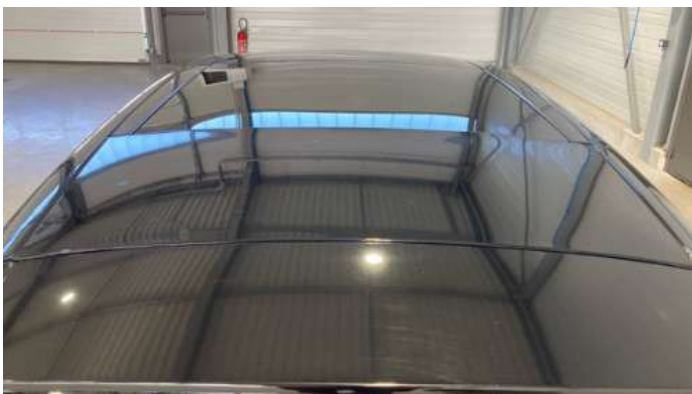
### Vehicle Summary

Vehicle Condition	Runner	VAT Type	Exempt Rate
Fuel Type	Diesel	Gearbox Type	Automatic
Colour	Black	Engine Size (cc)	1598
Engine Size	1.6	No of Doors	5
Body Type	MPV	Drive Train	Front
Charging Cables		No of Seats	7
NEDC CO2 Rating (q/km)	120	Seat Covering	
Engine Rating CV	8	Metalic Colour	Yes
Accident Damage	No	Euro Emission	
First Registration / Construction Year	2016-05-25 / 1900-01-01	Arrival Date	2026-04-14

### Vehicle History & Documents

Service Book Available	Missing	Previous Usage	Other
Manufacturer Warrenty		Odometer Warranty	No
Next Service Mileage	km	Imported	No







## Equipment

---

Central locking	Electrically folding wing mirrors	Rear parking sensors	Electric Tailgate
Cruise control	Front parking sensors	Satellite navigation	Electrically adjustable seats
Radio	Alloys wheels	Stability control	Front fog lamps

Power assisted steering

## Equipment Details

---

Presence Anti-Theft Lock Nut	Ok	Air Conditioning	Yes
Seat Heating	Front	Sunroof Type	Fixed Panoramic

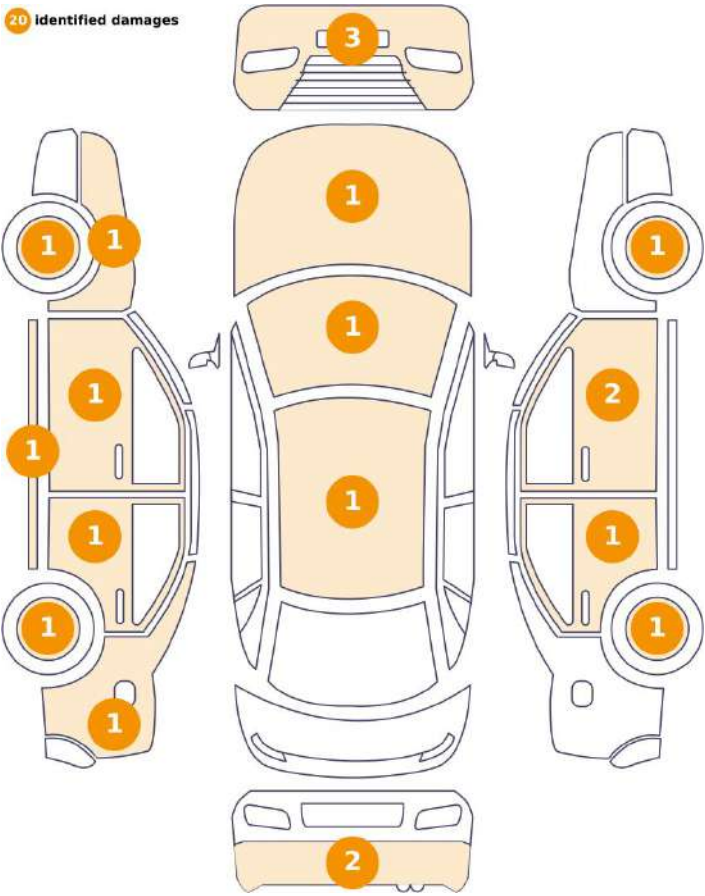
## Wheels & Tyres

---

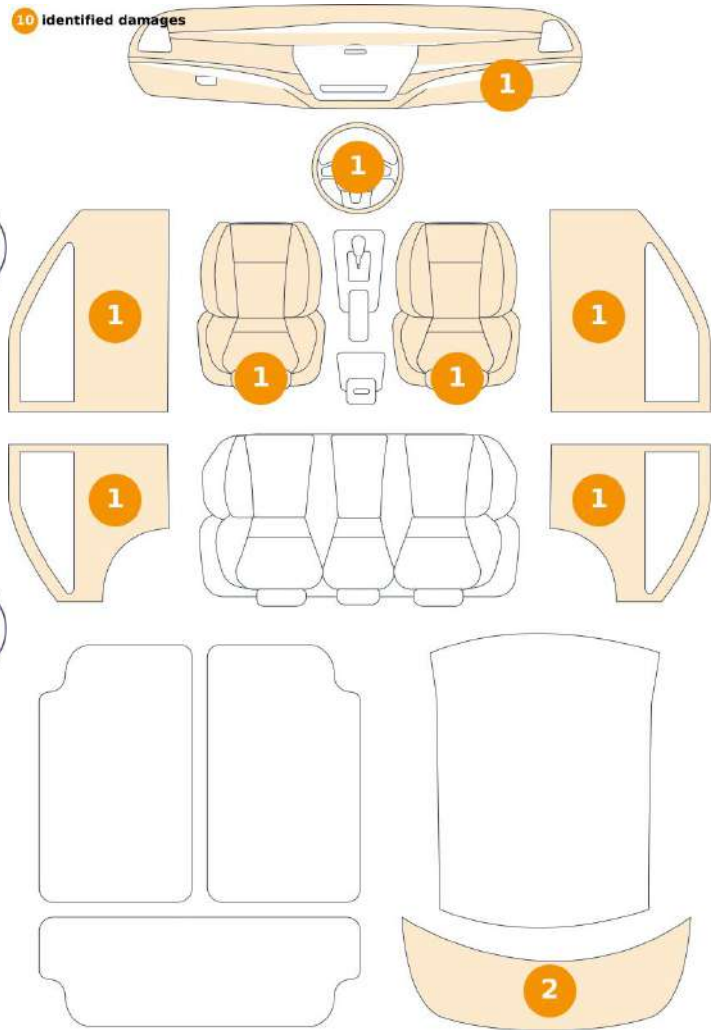
Left Rear Tyre Depth	4	Left Front Tyre Depth	7
Right Rear Tyre Depth	4	Right Front Tyre Depth	7
Tyres Comment	Présence d'un corps étranger dans le pneu arrière gauche.		

## Cosmetic Damage

20 Identified damages



10 Identified damages



Component	Damage	Comments
1 Door / Front Right	Paint / Stone Chip	
2 Rim / Front Left	Out of Bodywork / Scratch	
3 Panel Filling / Front Right	Interior / Worn - out	
4 Hood	Paint / Scratch / Line	
5 Corner Bumper / Front Left	Paint / Scratch / Line	
6 Roof	Paint / Scratch / Line	
7 Tailgate Upholstery / Back	Interior / Worn - out	
8 Bumper / Front	Paint / Stone Chip	
9 Fender / Back Left	Paint / Scratch / Line	
10 Fender / Front Left	Paint / Scratch / Line	
11 Panel Filling / Front Left	Interior / Worn - out	

12	Door / Back Right	Bodywork / Dent / Dent	Plus éclats zone gravillonnées sur l'ensemble du bas de la porte.
13	Panel Filling / Back Right	Interior / Worn - out	
14	Panel Filling / Back Left	Interior / Worn - out	
15	Seat Cushion / Front Left	Interior / Worn - out	
16	Trunk Upholstery / Back	Interior / Worn - out	
17	Rocker Panel / Center Left	Paint / Stone Chip	
18	Rim / Back Left	Out of Bodywork / Scratch	
19	Rim / Front Right	Out of Bodywork / Scratch	
20	Seat Cushion / Front Right	Interior / Worn - out	
21	Door / Front Left	Paint / Scratch / Line	
22	Rim / Back Right	Out of Bodywork / Scratch	
23	Glovebox	Interior / Worn - out	
24	Bumper / Back	Paint / Scratch / Line	
25	Mirror Shell / Front Right	Paint / Scratch / Line	
26	Corner Bumper / Back Left	Paint / Scratch / Line	
27	Steering Wheel / Front	Interior / Worn - out	
28	Corner Bumper / Front Right	Paint / Scratch / Line	
29	Door / Back Left	Paint / Scratch / Line	
30	Windshield / Front	Glass Break / Impact	



1. Door / Front Right  
Paint / Stone Chip -



2. Rim / Front Left  
Out of Bodywork / Scratch -



3. Panel Filling / Front Right  
Interior / Worn - out -



4. Hood  
Paint / Scratch / Line -



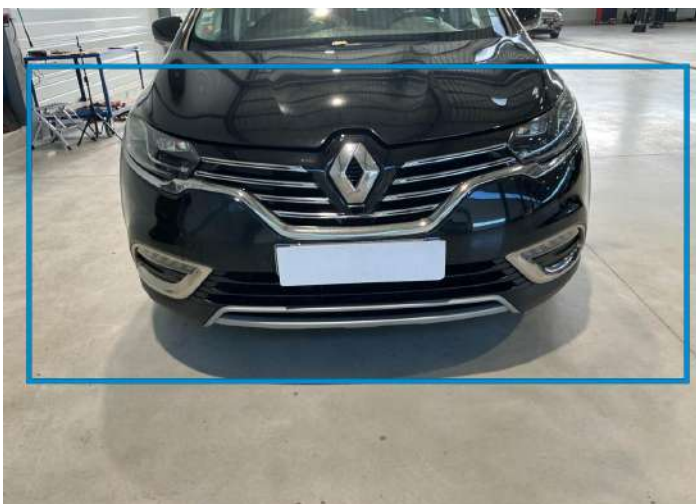
5. Corner Bumper / Front Left  
Paint / Scratch / Line -



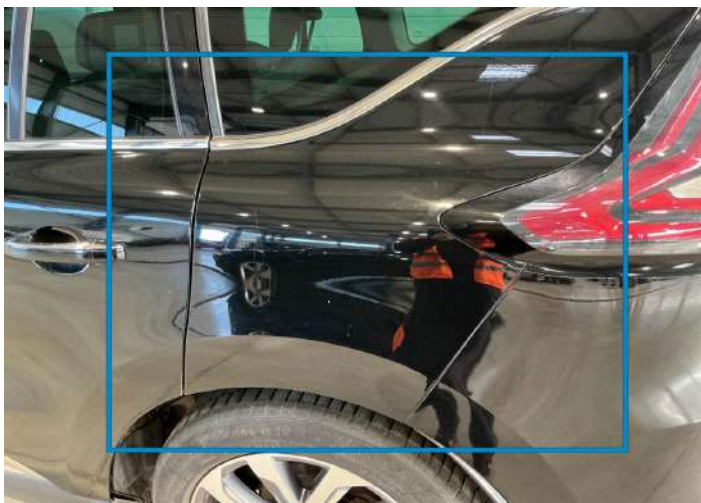
6. Roof  
Paint / Scratch / Line -



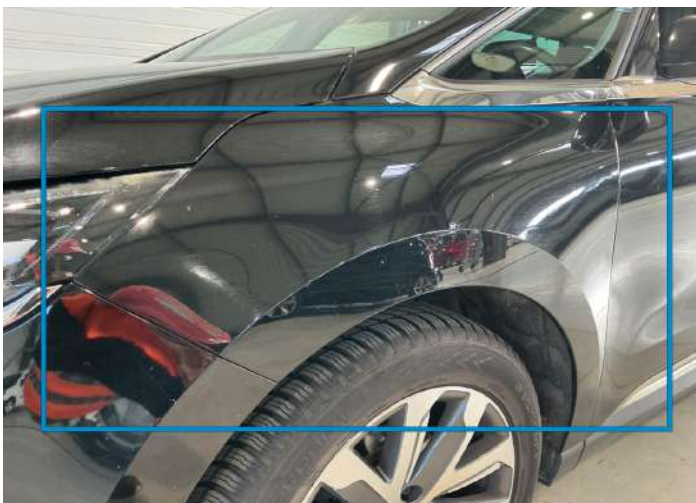
7. Tailgate Upholstery / Back Interior / Worn - out -



8. Bumper / Front Paint / Stone Chip -



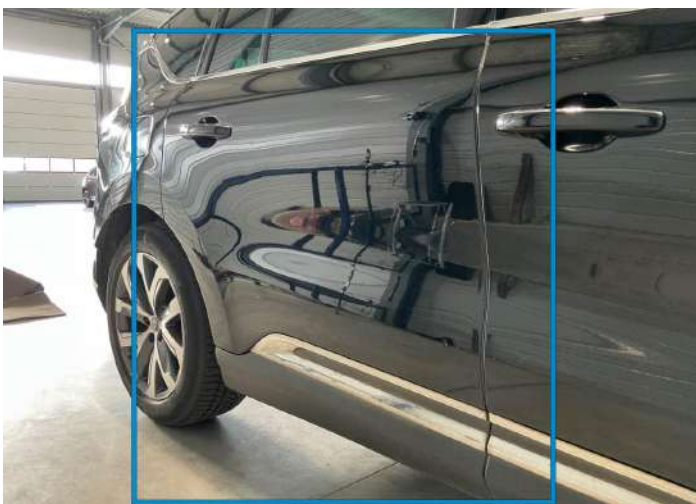
9. Fender / Back Left Paint / Scratch / Line -



10. Fender / Front Left Paint / Scratch / Line -



11. Panel Filling / Front Left Interior / Worn - out -



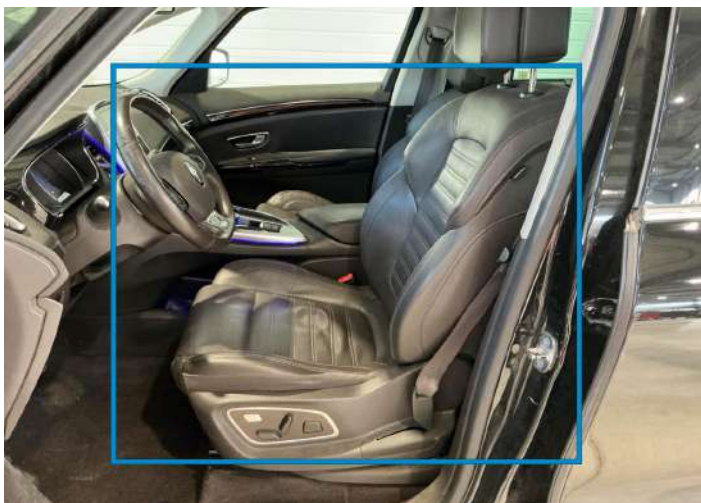
12. Door / Back Right Bodywork / Dent / Dent -  
Plus éclats zone gravillonnées sur l'ensemble du bas de la porte.



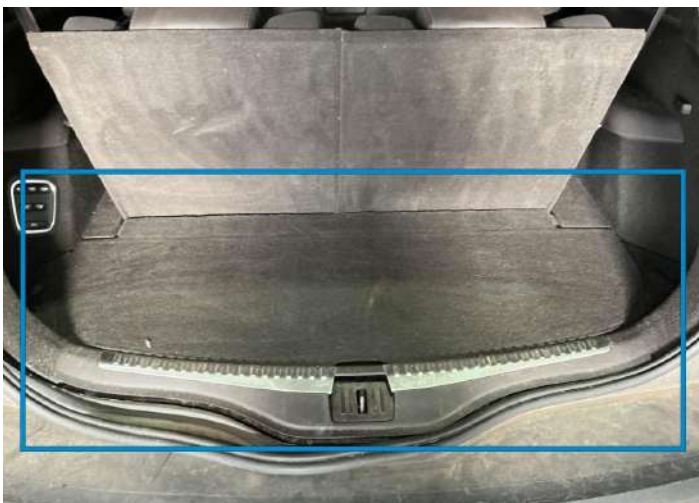
13. Panel Filling / Back Right Interior / Worn - out -



14. Panel Filling / Back Left Interior / Worn - out -



15. Seat Cushion / Front Left Interior / Worn - out -



16. Trunk Upholstery / Back Interior / Worn - out -



17. Rocker Panel / Center Left Paint / Stone Chip -



18. Rim / Back Left Out of Bodywork / Scratch -



19. Rim / Front Right  
Out of Bodywork / Scratch -



20. Seat Cushion / Front Right  
Interior / Worn - out -



21. Door / Front Left  
Paint / Scratch / Line -



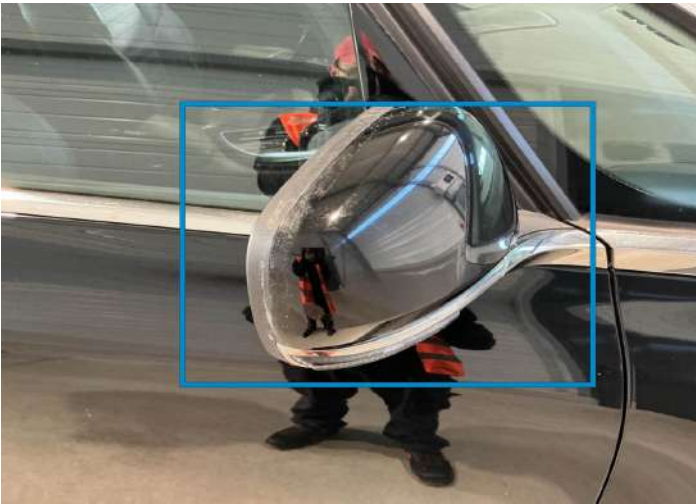
22. Rim / Back Right  
Out of Bodywork / Scratch -



23. Glovebox  
Interior / Worn - out -



24. Bumper / Back  
Paint / Scratch / Line -



25. Mirror Shell / Front Right  
Paint / Scratch / Line -



26. Corner Bumper / Back Left  
Paint / Scratch / Line -



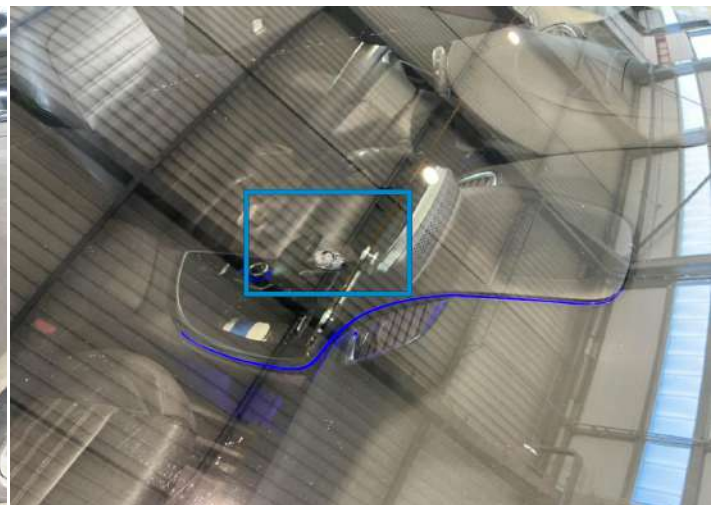
27. Steering Wheel / Front  
Interior / Worn - out -



28. Corner Bumper / Front Right  
Paint / Scratch / Line -



29. Door / Back Left  
Paint / Scratch / Line -



30. Windshield / Front  
Glass Break / Impact -

## Mechanical Condition

Levels			
Oil Condition	✓	Level - Oil	✓
Coolant Fluid - Condition	✓	Coolant Fluid level	!
Brakes Fluid	✓		
Engine			
Cross Member	✓	Serpentine Belt	✓
Control Liquid Leak	!		
Equipments Test			
Main & Spare Keys Functioning	✓	Parking Sensors / Cameras Functioning	✓
Convertible, Sunroof, Wagon, Flatbed truck, Tailgate electrics test	✓	Dump / Trail / Tail Gate Lift	NA
Electric Windows	✓	Audio Equipment	✓
Navigation System	✓	AC / Heating System	✓
Central Locking	✓		
Dashboard Lights			
ABS Warning Light	✓	Transmission Warning Light	✓
Diesel Particulate Filter Light	✓	ESP Fault/Traction Control Malfunction Light	✓
4WD Light	NA	Service Light	✓
Dashboard Working	✓	Engine Light	✓
Oil Pressure Warning Light	✓	Airbag Warning Light	✓
Brake Warning Light	✓	Steering Fluid Level	NA
Level - Fuel / Battery	10		
Hybrid/EV			
Charge Port Condition	NA	Charge lead 1 condition /Charge lead 2 condition	NA
Hybrid System Fault	NA		
Comments			

Comments

Vérin maintien capot fatigué,  
présence de fluide sur  
moteur et accessoires,  
amortisseur avant fatigué,  
toit ouvrant défectueux .

Test Drive Inspection

**Test Drive**

Engine functioning	✓	Engine / Aux Belt / Pulley Noise	✓
Steering Noise/Gripping	✓	Vehicle Starts	✓
Engine Power	✓	Smoke Quantity	✓
Transmission	✓	Clutch Functioning	NA
Brakes Functionning	✓	Steering	✓

- ✓ *No troubles detected, good condition or correct tests, according to vehicle age and mileage*
- ⚠ *Damages or malfunction detected that requires repairs by the buyer*
- NA *Not applicable*
- ☐ *Not tested*

Disclaimer Section

*The test drive is done on a flat surface and lasts about 2 minutes. The driven distance is a minimum of 300 meters, including a u-turn, an acceleration and a braking phase. The highest speed achieved during this test is 50km/h. The mechanical check is a visual and dynamic diagnosis without any disassembly. We cannot guarantee any mechanical wear part.*