



PEUGEOT 308

308 PureTech 130ch S&S EAT8 Allure

VIN NO VF3LPHNSRJS241861

Registration Number EX521LP



MOT Date



Last Service



Number of Owners



Last Service Mileage



Number of Keys



First Registration Date



Odometer Reading



Country First Registered



Inspection Report Summary

Customer	BCAuto Encheres	Mechanical Grade	
Inspection Date / Place	2026-04-17 / BCA INGRANDES	Cosmetic Grade	3

Vehicle Summary

Vehicle Condition	Runner	VAT Type	Exempt Rate
Fuel Type	Petrol	Gearbox Type	Automatic
Colour	Dark Grey	Engine Size (cc)	1199
Engine Size	1.2	No of Doors	5
Body Type	Hatchback	Drive Train	Front
Charging Cables		No of Seats	5
NEDC CO2 Rating (q/km)	117	Seat Covering	
Engine Rating CV	7	Metalic Colour	Yes
Accident Damage	No	Euro Emission	
First Registration / Construction Year	2018-05-22 / 1900-01-01	Arrival Date	2026-04-17

Vehicle History & Documents

Service Book Available	-	Previous Usage	Other
Manufacturer Warranty		Odometer Warranty	No
Next Service Mileage	km	Imported	No





Equipment

Central locking	Rear parking sensors	Stability control	Power assisted steering
Radio	Alloys wheels	Cruise control	Satellite navigation

Equipment Details

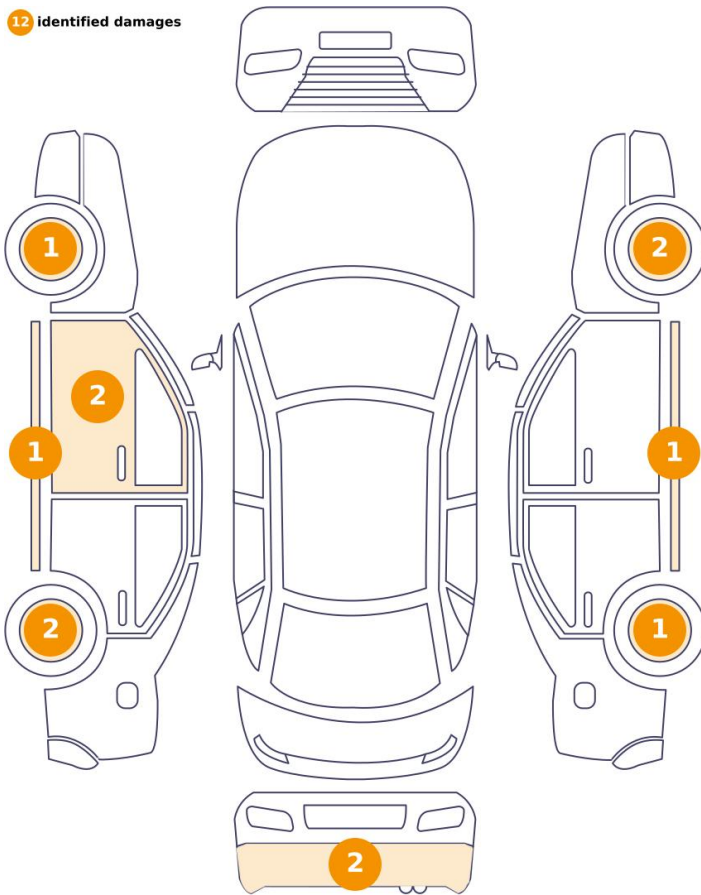
Presence Anti-Theft Lock Nut	Ok	Air Conditioning	Yes
Seat Heating	No	Sunroof Type	Tilt/Slide Steel

Wheels & Tyres

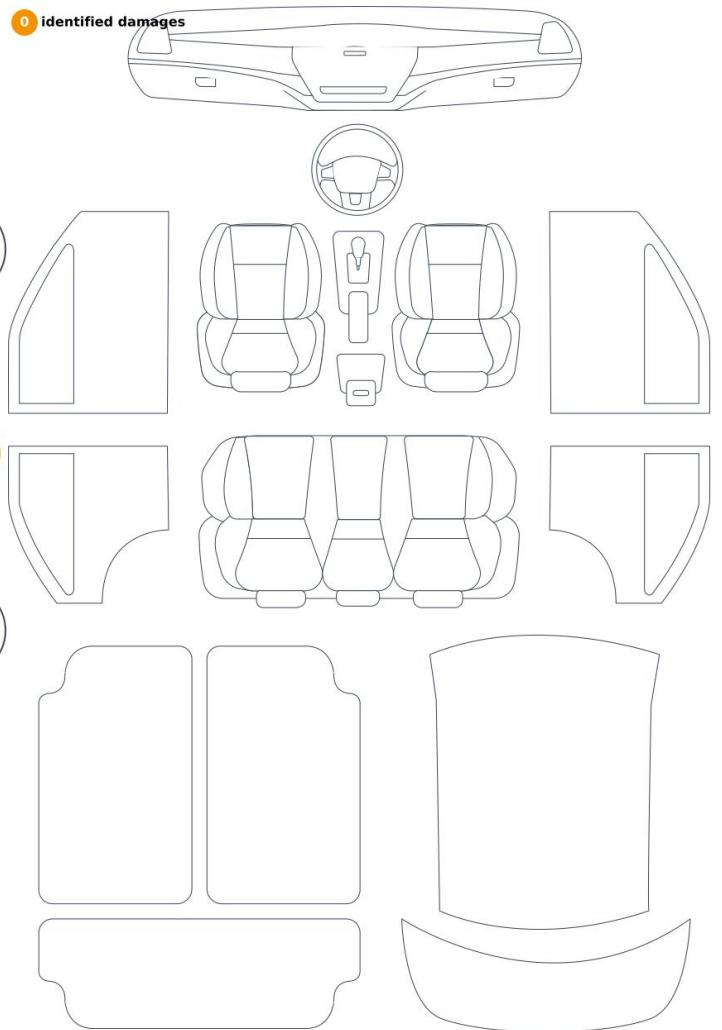
Left Rear Tyre Depth	4	Left Front Tyre Depth	4
Right Rear Tyre Depth	4	Right Front Tyre Depth	4

Cosmetic Damage

12 identified damages



0 identified damages



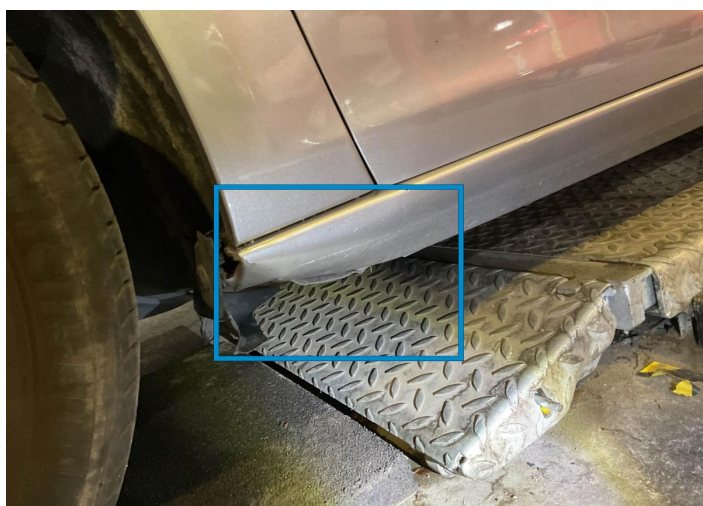
Component	Damage	Comments
1 Rim / Front Right	Out of Bodywork / Scratch	
2 Rim / Back Right	Out of Bodywork / Scratch	
3 Rocker Panel / Center Left	Bodywork / Dent / Deformation	
4 Rim / Back Left	Out of Bodywork / Scratch	
5 Rocker Panel / Center Right	Bodywork / Dent / Deformation	
6 Rim / Front Left	Paint / Stone Chip	
7 Rim / Front Right	Out of Bodywork / Scratch	
8 Rim / Back Left	Out of Bodywork / Scratch	
9 Bumper / Back	Paint / Stone Chip	
10 Door / Front Left	Paint / Scratch / Line	
11 Bumper / Back	Paint / Stone Chip	



1. Rim / Front Right
Out of Bodywork / Scratch -



2. Rim / Back Right
Out of Bodywork / Scratch -



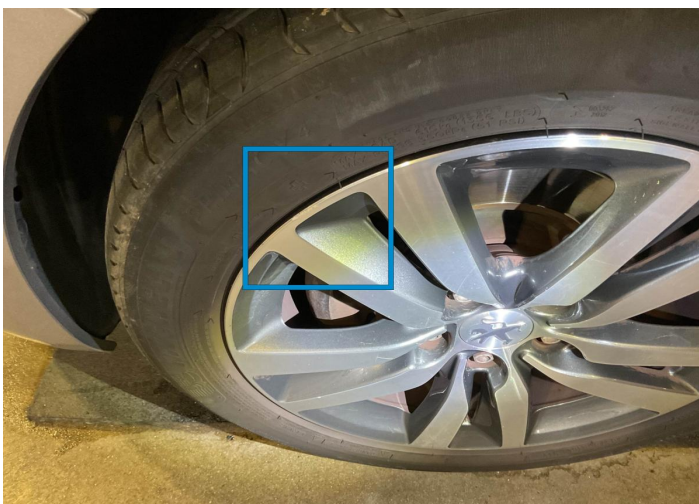
3. Rocker Panel / Center Left
Bodywork / Dent / Deformation -



4. Rim / Back Left
Out of Bodywork / Scratch -



5. Rocker Panel / Center Right
Bodywork / Dent / Deformation -



6. Rim / Front Left
Paint / Stone Chip -



7. Rim / Front Right
Out of Bodywork / Scratch -



8. Rim / Back Left
Out of Bodywork / Scratch -



9. Bumper / Back
Paint / Stone Chip -



10. Door / Front Left
Paint / Scratch / Line -



11. Bumper / Back
Paint / Stone Chip -



12. Door / Front Left
Paint / Scratch / Line -

Mechanical Condition

Levels			
Oil Condition	✓	Level - Oil	✓
Coolant Fluid - Condition	✓	Coolant Fluid level	✓
Brakes Fluid	✓		
Engine			
Cross Member	✓	Serpentine Belt	✓
Control Liquid Leak	✓		
Equipments Test			
Main & Spare Keys Functioning	✓	Parking Sensors / Cameras Functioning	✓
Convertible, Sunroof, Wagon, Flatbed truck, Tailgate electrics test	NA	Dump / Trail / Tail Gate Lift	NA
Electric Windows	✓	Audio Equipment	✓
Navigation System	✓	AC / Heating System	✓
Central Locking	✓		
Dashboard Lights			
ABS Warning Light	✓	Transmission Warning Light	✓
Diesel Particulate Filter Light	✓	ESP Fault/Traction Control Malfunction Light	✓
4WD Light	NA	Service Light	✓
Dashboard Working	✓	Engine Light	✓
Oil Pressure Warning Light	✓	Airbag Warning Light	✓
Brake Warning Light	✓	Steering Fluid Level	✓
Level - Fuel / Battery	15		
Hybrid/EV			
Charge Port Condition	NA	Charge lead 1 condition /Charge lead 2 condition	NA
Hybrid System Fault	NA		
Comments			

Test Drive Inspection

Test Drive

Engine functioning	✓	Engine / Aux Belt / Pulley Noise	✓
Steering Noise/Gripping	✓	Vehicle Starts	✓
Engine Power	✓	Smoke Quantity	✓
Transmission	✓	Clutch Functioning	✓
Brakes Functioning	✓	Steering	✓

✓ **No troubles detected, good condition or correct tests, according to vehicle age and mileage**

! **Damages or malfunction detected that requires repairs by the buyer**

NA **Not applicable**

☐ **Not tested**

Disclaimer Section

The test drive is done on a flat surface and lasts about 2 minutes. The driven distance is a minimum of 300 meters, including a u-turn, an acceleration and a braking phase. The highest speed achieved during this test is 50km/h. The mechanical check is a visual and dynamic diagnosis without any disassembly. We cannot guarantee any mechanical wear part.